



*for all creatures great and small*



## **Our mission**

To prevent cruelty to animals by actively promoting their care and protection

## **Our objectives**

To prevent cruelty to animals by enforcing existing laws  
To lobby for better legal protection for animals  
To keep the public informed about the care and treatment of animals  
To operate veterinary hospitals and animal shelters  
To educate the community about the humane treatment of animals

## **Five freedoms**

The RSPCA believes in the five freedoms for animals

### **Freedom from hunger and thirst**

Ready access to fresh water and a diet to maintain full health and vigour

### **Freedom from discomfort**

An appropriate environment including shelter and a comfortable resting area

### **Freedom from pain, injury or disease**

Access to rapid diagnosis and treatment

### **Freedom to express normal behaviour**

Sufficient space, proper facilities and the company of the animal's own kind

### **Freedom from fear and distress**

By ensuring conditions and treatment which avoid mental suffering

For all creatures great and small



2	Donations	42	Training
3	President's report	44	Veterinary clinics
4	Minister's support	49	Bequests
5	RSPCA Patrons	50	Special events and fundraising
6	Chief Executive Officer's report	52	Media
7	Inspectors	54	Occupational health, safety and welfare
13	Shelters and branches	55	Environment
17	Financial statements	56	Information technology
40	Legacies		

## What your donation can do for animals

\$4 feeds a dog for one day

\$9.90 provides shelter for an  
animal for one day

\$140 desexes a female cat

\$200 keeps an RSPCA inspector on the road

\$2000 repairs a dog's broken leg

\$4000 pays the legal costs for one day  
to prosecute a cruelty offender

\$30,000 would pay for an in-house  
laboratory at Newcastle RSPCA clinic

To donate to the RSPCA phone

**1800 803 355**

**RSPCA NSW 2003/2004 ANNUAL REPORT**

Compiled and edited by RSPCA Publications Officer Jilea Carney with the  
assistance of staff and branch office bearers

Design, photography and production by MP Media Printed by Pirion Printers

It has been a progressive year for RSPCA NSW, with the much-awaited shelter rebuilding program now underway, the expansion of new and existing animal welfare programs and the introduction of innovative new community-based programs.

There are many who have helped the Society progress during the past year.

This year we particularly wish to thank the Minister for Agriculture the Hon Ian Macdonald and his Department for their continued assistance to the RSPCA and their help in animal welfare issues such as the ban on the cosmetic docking of dogs' tails. This is now a reality in all States and Territories and a real breakthrough in reducing unnecessary suffering in animals.

Special thanks must go to the officers of the NSW Police and NSW Fire Brigades who provided invaluable assistance in the field, easing the burden on RSPCA inspectors and preventing the suffering of thousands of animals. We acknowledge the Australian Veterinary Association (AVA), particularly for their assistance as we work together in education in schools and in community animal welfare schemes. There are also many individual people who, by word or deed, help animals every day in many ways. Each kind act is a significant step forward.

Nationally, we continued to strive for better outcomes for animals, working closely with other States, Territories and RSPCA Australia on national campaigns and scientific endeavours to improve the welfare of animals.

RSPCA NSW worked closely with our branch network during the year and provided funding to implement much-needed programs to help reduce the tragedy of unwanted animals and improve animal welfare in regional areas. Our hard working branches have now held successful desexing programs in numerous rural and regional locations. The annual branch conference at Armidale enabled the board of directors and staff to exchange ideas with our valued members and provide them with resources to continue their work.

The RSPCA also provided staff resources for desexing programs with the AVA at Bourke and the Far West Area Health Scheme at Wilcannia. We are determined to win the battle and turn the tide of the numbers of unwanted animals. With the support of the community and local councils, these programs will ultimately make a real difference to the future of these communities.

The RSPCA is reaching further out into the community, with new programs to alleviate both animal and human distress, including emergency boarding for pets of people with long term illnesses, for the elderly, for people with disabilities and for victims of domestic violence. The links between violence to people and to the animals relying on us for food and shelter have long been recognised internationally and are now being recognised in Australia. The RSPCA aims to be at the forefront in dealing with this issue.

Another community problem, also sinister and tragic, is the problem of hoarding large numbers of animals, which has a profound affect on the animal victims and on the people involved. This continues to be the subject of intensive work by our Inspectorate.

Our strength lies in consulting and liaising widely with our branch members, staff and the community, supplying them with the knowledge and the tools to ensure a range of animal welfare successes consistent with people's expectations and the needs of animals.

Two years ago, the board identified the need to improve communications with branches to ensure they kept abreast of changes affecting the welfare of animals and to allow feedback and a healthy exchange of information. Communications continue to improve, with the website, email, media information and regular attendance by senior staff at branch meetings.

On behalf of my fellow directors, I wish to acknowledge the magnificent work of our members, volunteers and staff who are the unsung heroes of animal welfare. Their kindness and compassion to creatures in need is an inspiration to us all.



**Andrew Wozniak**  
President





New South Wales



## **MINISTER FOR PRIMARY INDUSTRIES**

The State Government has tackled a number of issues in cooperation with the RSPCA and other animal welfare groups over the past year. For my part, I remain committed to fostering that working relationship with all those groups; on both new and continuing projects.

Examples of projects which have benefited from this cooperative approach over the last 12 months include issues affecting livestock as the drought drags into its third year. I know the farming community appreciates the on-going efforts to distribute much-needed feed and water for animals.

I commend the RSPCA for its efforts in enforcing the Prevention of Cruelty to Animals Act 1979 (POCTAA). In October 2003, the State Government honoured an election commitment and passed legislation doubling the penalties for aggravated animal cruelty under POCTAA. This sends a clear message that the Government is serious about stamping out animal cruelty.

In April 2004, NSW became the last State to join the national ban on tail docking for cosmetic purposes. This decision strikes an appropriate balance between the concerns of the broader community, dog breeders and the welfare of animals.

I also applaud the many other innovative partnerships, such as the Safe Beds for Pets program with the St George Hospital Domestic Violence Unit. This program recognises that pets are often the silent victims of domestic violence. It gives some assurance to people who leave abusive situations that their pets will also be given appropriate care.

The State Government will continue to work with the RSPCA over the coming year.

**The Hon. Ian Macdonald, MLC**  
**NSW Minister for Primary Industries**



## Premier of New South Wales

### A MESSAGE OF SUPPORT RSPCA NSW PATRON PREMIER BOB CARR

As Premier and Patron of the RSPCA, I am pleased to provide this message of support for their annual report.

For more than 130 years the RSPCA has been carrying out its praised and widely celebrated work in animal rescue, hospitalisation, half-way housing, inspection and adoption.

The RSPCA Annual Report 2004 details the fine work done by the RSPCA to investigate and reduce acts of cruelty and neglect.

The RSPCA has also had input into the development of animal welfare laws and regulations, including the Companion Animals and Prevention of Cruelty to Animals Acts. Most recently, they worked closely with the Minister for Agriculture, Ian Macdonald, to introduce a ban on the cosmetic docking of dogs' tails.

Thankfully, these policies and community education are having some effect. People are starting to get the message about animal cruelty with more animals are being reclaimed and more being given new homes, however, the battle to protect animals goes on.

Fortunately the RSPCA is there to assist us in that vital task. It is a big organisation that provides an important community service.

I thank the RSPCA for another year of care and service, and commend their 2004 Annual Report to you.

**Bob Carr**  
Premier



from left: Patron John Brogden MP,  
Leader of the Opposition and  
Patron the Hon David Brownhill

Our strong network of 24 branches continued their efforts to reduce the numbers of homeless animals through branch de-sexing programs in regional NSW and metropolitan Sydney this past year.

Figures for 2003-4 indicate there could be a serious problem emerging in relation to cat numbers, and we have seen an increase of 2000 in the numbers of cats received by our shelters throughout the State. Of the 13,580 cats we cared for this year, more than half (8556) were strays.

It would seem this could be attributed to a failure by councils to take responsibility for stray cats by exercising proper cat control and we will be encouraging councils to take a stronger role in this area during the coming year. I am pleased however to report dog numbers have dropped and our euthanasia rate is marginally down across the State. We now call on councils to act on cat control to avoid an animal welfare and environmental disaster.

Meanwhile, the RSPCA is progressing work with councils in NSW, managing more pounds and bringing animals into the shelter system after their pound period is complete. We now have a council liaison officer, who is developing relations with these important stakeholders in animal welfare.

RSPCA NSW has now begun phase one of our major \$29 million shelter building program, with work commencing at the Rutherford site. The \$9 million Rutherford shelter should be operational in April or May 2005, servicing the Hunter Valley region. We have put \$7 million in reserves to build a new Wollongong facility, which we expect to have completed in the third quarter of 2005.

Because of the expense involved in building the Yagoona complex, it will be built in several stages. The first stage, animal holding areas and a new clinic will be constructed at a cost of \$12 million, with a new education facility staged to commence at a later date. Plans are also underway to build a legacy cattery at Somersby in 2005, which will allow our legacy cats to live out their days enjoying every creature comfort.

The website has attracted thousands of 'hits' this year and has been hugely successful in re-homing animals through our *Save our Seniors* and *Last Chance Club* sites. Thanks to volunteer support, our adoption animals are now online, with technology helping to find homes locally and in other towns and cities across Australia.

I am pleased to report that in the past two years we have employed four more inspectors in the field. We aim to increase inspector numbers by an additional eight over the next few years, with particular attention being focused on regional areas.

RSPCA NSW is also listening more closely to our branches, supporting them through the branch grants program, with guidance and training as they act locally to improve animal welfare.

The Society consulted widely with the agricultural industry



during the year, in particular with the NSW Farmers Association and the Rural Lands Protection Board, to help improve conditions for animals and people on the land. Unfortunately it often takes a tragedy to ultimately bring about much needed change to animal welfare and the loss of 5700 sheep stranded for nine weeks on board the Cormo Express brought the issue of live exports to attention of the public. RSPCA NSW joined other State and Territory member Societies in supporting RSPCA Australia to lobby for a phasing out of live export and replacing it with a sustainable carcass trade.

Helping children understand their responsibilities to animals is important to the future of animal welfare and RSPCA NSW is investing more funds in education, with plans to integrate strategies such as online 'virtual' classrooms into our education program and train education volunteers to go into schools. The RSPCA also continued its support of the Australian Veterinary Association's PetPEP (Pets and People Education Program) and worked closely with the AVA on many animal welfare issues, including the tail docking campaign.

The Society is providing management support to the RSPCA in the Northern Territory and Tasmania, both of whom have experienced difficulties in this area. To ignore the plight of a fellow Society when we have the resources needed to make a difference would be inconsistent with the great principles of the RSPCA.

International research has seen advancements in humane chemical de-sexing of feral animals. While programs involving these methods are not yet fully functional, RSPCA NSW veterinarians are actively involved in any positive and humane advancements which will ultimately improve the lives of the animals and protect wildlife.

A handwritten signature in blue ink, which appears to read "Bernie Murphy". The signature is fluid and cursive, written over a white background.

**Bernie Murphy**  
**Chief Executive Officer**



The RSPCA NSW inspectorate is responsible for the investigation of all cruelty complaints received. Our aim is to ensure that those investigations are carried out as quickly, efficiently and as professionally as possible. Our goal is to see that people responsible for acts of cruelty towards animals are prosecuted.

### Staff

We have 31 staff made up of one chief inspector, one deputy chief inspector, two team leaders (one regional and one metropolitan), 14 regional inspectors and 13 metropolitan inspectors. There are two technical assistants who run the office.

It is important that the work of the inspectorate is acknowledged, both in the metropolitan area and the regions. Our inspectors have a difficult job under trying circumstances, and should be congratulated on the way they carry out their duties. Our office staff also deserve thanks.

This year has seen some staff changes. Inspector Sue Hill has moved from the inspectorate to become the manager of the Port Macquarie area, Lindsay Wilkinson has become the Society's occupational health and safety liaison officer. Three other staff have left the RSPCA Inspectorate.

Inspector Alistair Hills has moved from Armidale to the Far North Coast Region, and Inspector Andrew Kelly has moved from Sydney to take up a position at Coffs Harbour.

New inspectors include Katharina Theodore, a former Taronga Zoo employee, Bob McIntyre, a former police officer and Peta Reeves, who was previously employed as a ranger for the Rural Lands Protection Board. Natalie Tasker, a former Wollongong Shelter employee, also joined the team as an assistant in our office. These new staff bring a range of skills to the inspectorate.

### Drought

The drought has continued to have an impact on our State, and continues to create a lot of work, particularly for the regional inspectors. Our staff continue to work with NSW Agriculture and with Rural Land Protection Boards across the State, giving assistance and advice to people having problems with their animals during this difficult time.

### Training

Staff have undergone training in first aid, animal first aid, zoonoses, disease and signs of ill health in animals, firearm and baton training, the use of handcuffs and wildlife and reptile handling. Some inspectors have had training in occupational health and safety (OH&S) and specialised dart gun capture. Most staff have also had emergency management training. Our annual RSPCA NSW inspectors' conference was held in July. Presenters included RSPCA Australia's scientific officer, Bidda Jones and the NSW Police Stock Squad's Steve Bradshaw. NSW Agriculture staff presented information on drought mapping. Other issues included the problem of cock fighting, OH&S issues, conflict negotiation, the benefits of branch inspectors and strong liaison with RSPCA branches.

### Disasters

While the drought is an ongoing disaster, we have not had destructive bush fires to deal with as well this year. However, the continuing dry weather will increase the chances that fire

will further compound the problems we are facing. Our inspectors are ready as ever to meet the challenges ahead.

### Significant prosecutions

Forty-eight-year-old Thomas Ramsay was sentenced to nine months' imprisonment for aggravated cruelty after he allowed a cock fight to occur on his property at Mulgoa. He appealed against the sentence, and the case is still before the courts. The RSPCA also prosecuted a number of spectators for attending the cock fight.

David Justelius (68) of Avalon, was convicted on 56 charges and Averine Midkiff (57), also of Avalon, was found guilty of one charge relating to the condition of their 32 Maltese terriers. Justelius was ordered to pay the RSPCA \$73,000 in costs and was placed on a two year good behaviour bond. This case is presently under appeal. This case highlighted the problems the RSPCA has with animal hoarders.

Kra-Mar Pet Supplies was prosecuted for supplying electric collars for dogs. The company was fined \$2500, and ordered to pay \$6691 towards RSPCA costs. Kra-Mar appealed and while charges were proven, no conviction was recorded and the fine dismissed. The costs order was upheld. The RSPCA considers the use of these collars a cruel training method and that the results of Kra-Mar's appeal was disappointing.

John Robert Kirk of Rylstone was prosecuted for cruelty, aggravated cruelty, and setting of traps with the intention of catching wedge-tailed eagles. This was a joint prosecution with the National Parks and Wildlife Service (NPWS). In a disappointing result, the aggravated cruelty and cruelty matters were all dismissed, and Kirk was fined \$500 for setting 46 traps. Offences prosecuted by the NPWS attracted fines of \$750 and \$500. Kirk appealed. The penalty was confirmed, but not increased. This was a disappointing outcome – Kirk was responsible for the destruction of a number of wedge-tailed eagles.



Chief inspector Don Robinson

Peter Orr, of Tamworth, was found guilty of failing to provide proper and sufficient food and veterinary care to 32 horses. He was fined \$550 for failing to supply food to 29 horses and ordered to pay \$1500 in witness costs.

Fifty-four-year-old George Kemeny from Blacktown, was convicted of eight charges of failing to provide food to his dogs. He also faced charges of failing to provide veterinary treatment. He received a two year good behaviour bond and was ordered to pay \$25,800 costs.

During the reporting year, 21 percent of all offenders prosecuted were stock owners and 40 percent of prosecutions launched related to livestock.

### Highlights

Tail docking is finally against the law, except for veterinary reasons. Backyard tail docking often causes animal suffering. The RSPCA has been actively opposed to this practice for many years and we thank the many supporters who signed our postcards and petitions. Since the new legislation was passed, we have had no complaints about illegal tail docking.

Cock fighting was a particular target of our investigations this

year. Three successful raids were conducted in conjunction with the police, resulting in a number of prosecutions.

During the year, the Justices Act was repealed. After negotiations with the Attorney-General's Department, RSPCA inspectors were listed as Public Officers under the new legislation. This had the effect that we could issue our own court attendance notices, without them having to be issued by an authorised Justice.

### Acknowledgments

Throughout the year, RSPCA inspectors have been able to consistently rely on local police if they are unable to attend to complaints as quickly as they would like. Police prosecutors continue to put many of our matters before local courts, and we are grateful to them for their continued assistance. This saves the RSPCA thousands of dollars every year.

The Animal Welfare Unit of NSW Agriculture has continued to assist us, as have many Rural Lands Protection Boards. They are particularly helpful in providing veterinary advice.

- Don Robinson  
Chief inspector



Inspector Lisa McLean

RSPCA inspectors helped many animals like this horse over the past year



**Prosecution Summary RSPCA NSW 2003 - 2004**

**Number of Defendants** 112  
**Number of Offences** 652

<b>Offence</b>	<b>Birds</b>	<b>Cat</b>	<b>Cattle</b>	<b>Dog</b>	<b>Goat</b>	<b>Horse</b>	<b>Native</b>	<b>Pig</b>	<b>Sheep</b>	<b>Total by offence</b>
Prevention of Cruelty to Animals Act 1979 (as amended)										
Commit an act of cruelty	2	1	1	5	0	0	0	0	0	9
Authorise commission of an offence	0	0	2	0	0	0	0	0	0	2
Fail to exercise reasonable care, control or supervision	0	1	2	6	0	1	0	0	0	10
Fail to alleviate pain	0	0	0	1	0	1	0	0	0	2
Fail to provide veterinary treatment	2	4	2	131	1	10	10	2	7	169
Commit an act of aggravated cruelty	26	3	10	47	1	7	2	6	76	178
Fail to provide proper and sufficient:										
Food	4	2	4	103	1	8	62	6	9	199
Water	1	0	2	3	0	0	14	0	1	21
Shelter	1	0	0	1	0	0	0	1	0	3
Confined animal to be exercised	1	0	0	0	0	0	0	0	0	1
Did abandon an animal	0	0	0	2	0	0	0	0	0	2
Did tether an animal	0	0	0	3	0	0	0	0	0	3
Did face brand an animal	0	0	2	0	0	0	0	0	0	2
Did possess cock fighting spur	1	0	0	0	0	0	0	0	0	1
Did possess training implement	1	0	0	0	0	0	0	0	0	1
Did sell an electric collar	0	0	0	6	0	0	0	0	0	6
Did possess an electric collar	0	0	0	6	0	0	0	0	0	6
Did confine a bird by ring and chain	1	0	0	0	0	0	0	0	0	1
Prevention of Cruelty to Animals (Animal Trades) Regulation 1996										
Animal trade to be maintained in clean and hygienic condition	0	0	0	32	0	0	0	0	0	32
Fail to keep Animal Trade records	0	0	0	2	0	0	0	0	0	2
Not comply with Code of Practice	0	0	0	6	0	0	0	0	0	6
<b>Total by animal</b>	<b>39</b>	<b>11</b>	<b>25</b>	<b>350</b>	<b>3</b>	<b>27</b>	<b>88</b>	<b>15</b>	<b>94</b>	<b>652</b>

## Total RSPCA NSW Inspectorate Complaints Statistics 2003 - 2004

<b>RSPCA NSW TOTAL</b>	<b>Bird</b>	<b>Cat</b>	<b>Dog</b>	<b>Fowl</b>	<b>Horse</b>
ABANDONED	45	262	808	16	31
ANIMAL PARK INSPECTION			2		
CAT UP TREE		17			
CIRCUS INSPECTION					
COCK FIGHTING	14				
CONCERN FOR WELFARE	50	97	577	17	130
DEAD	27	15	68	21	16
DOG FIGHTING			31		
DROUGHT					3
EXERCISE INADEQUATE	9	8	740	2	29
EXPOSED TO HEAT	7	4	185	3	21
FEEDLOT INSPECTION	1	4	7		5
FOOD AND WATER	179	564	3829	96	986
ILL TREATMENT	32	64	695	24	33
KENNEL INSPECTION	1	6	72		
KILLED	7	8	22	5	1
LOCKED IN CAR	2	1	61	1	
LOCKED IN HOUSE	4	65	126		
LOCKED IN LAUNDRY		4	22		
LOCKED IN SHED		7	99	3	
LOCKED IN SHOP	1	1	4		
LOCKED IN SMALL PEN	89	38	531	31	48
OPERATION CHAMPION			7	4	
ORGANISED CRUELTY	2	1	8		
OTHER	183	324	1795	58	380
OVERCROWDED	56	10	61	19	9
PET SHOP INSPECTION	106	10	137	2	
POISONING	6	4	8		
POULTRY INSPECTION				10	
PREMISES INSPECTION	27	11	793	19	11
REQUIRED RESCUE		178	169	9	15
RIDING SCHOOL INSPECTION					6
SALE YARD INSPECTION				2	
SHELTER INADEQUATE	49	25	1179	13	121
STABLE INSPECTION					4
TIED CONTINUALLY	3	2	1227	2	58
TRANSPORT UNSATISFACTORY	1		43	6	3
VETERINARY TREATMENT	69	344	1528	20	492
<b>TOTAL</b>	<b>970</b>	<b>2074</b>	<b>14,837</b>	<b>383</b>	<b>2402</b>

# RSPCA<sup>®</sup>

## INSPECTORS

Kitten	Livestock	Camel	Small Pets	Wildlife	Other	Total
57	32		44	4	8	1307
	3		4	4		13
3						20
				1		1
						14
16	139		22	13	12	1073
11	86		25	7	1	277
						31
	7				4	14
	4		5	6	4	807
4	20		14	13		271
	4		1		1	23
143	562	1	165	45	25	6595
25	51		24	14	9	971
2					1	82
2	7		6	5	1	64
4	2					71
13			2			210
2			1			29
			3	1		113
	1		2	1		10
6	36		65	39	3	886
					1	12
1	1		2		1	16
83	273		134	51	13	3294
6	25		72	13	7	278
31	1		96	7	8	398
	1					19
						10
33	13		33	5	19	964
61	49		7	18	3	509
						6
	3					5
9	71		30	11	2	1510
					1	4
	87		3		2	1384
	9		1	2		65
84	368		43	23	11	2982
<b>596</b>	<b>1855</b>	<b>1</b>	<b>804</b>	<b>283</b>	<b>137</b>	<b>24,411</b>

### PREVENTION OF CRUELTY TO ANIMALS ACT 1979 (as amended)

Section	Offence	2002-2003	2003-2004
Section 5(1)	Commit an act of cruelty	14	9
Section 5(2)	Authorise commission of offence	-	2
Section 5(3)(a)	Fail to exercise reasonable care, control, supervision	21	10
Section 5(3)(b)	Fail to alleviate pain	3	2
Section 5(3)(c)	Fail to provide veterinary treatment	90	169
Section 6(1)	Did commit an act of aggravated cruelty	126	178
Section 8(1)	Did fail to provide - food, water, shelter	93	223
Section 9(1)	Confine an animal	20	1
Section 10(1)(a)	Tether an animal	8	3
Section 11	Abandon an animal	3	2
Section 12(1)(g)	Face brand an animal	-	2
Section 16(2)	Electric collar - sell, possess, use	30	12
Section 17	Possess training or fighting spur	-	2
Section 21D	Confine bird by ring/chain	-	1

### Complaints, offences and prosecutions over past five years

Year	Complaints	Offences	Defendants
1999-2000	18,883	153	77
2000-2001	18,831	239	103
2001-2002	23,369	346	106
2002-2003	12,594	442	119
2003-2004	12,748	656	112



Inspector Graeme Dymond



Inspector Peta Reeves



The RSPCA has nine shelters in NSW and 24 branches.

Our vision is to provide the best possible care and assistance to abandoned, surrendered, unwanted, sick or injured animals. We aim to be a resource to the community and to assist people to be responsible animal owners by providing education. And we aim to support potential animal owners make an informed choice and understand the commitment involved in owning an animal.

One of our most important priorities is to ensure that all domestic animals are desexed before going home so as to reduce the numbers of unwanted and abandoned animals in the community.

The past 12 months has seen ten branches participate in community-based desexing programs with the help of RSPCA funding. A total of \$90,400 was provided to these branches for desexing projects and more money is already committed for this coming year.

A comprehensive tour of northern NSW by the Queensland based Education Mobile Unit (EMU), combined with a desexing program in Moree, helped take the RSPCA's philosophy of responsible pet ownership to over 1250 schools students.

We are continuing to meet the training needs of our staff to take better care of the animals who seek shelter with us. This is an on-going commitment and benefits volunteers as well as staff.

The appointment of a council liaison officer has allowed us to form partnerships with local councils to operate pounds. This ensures the RSPCA's strict standards of animal welfare are applied to stray and homeless animals impounded by council rangers. The RSPCA recognises this is an important aspect of animal welfare and we are pleased with the opportunity to work with councils.

Working with animals is an area which has many occupational health and safety issues which need to be addressed. Risk assessments are now being done in all areas of our operation – shelters, pounds and clinics as well as shops and regional inspectors' offices.

The RSPCA's biggest financial commitment has been to rebuild the Newcastle, Wollongong and Yagoona shelters. A massive \$29 million is being spent on the redevelopment of these shelters. The hard work has been done in the last 12 months – the sites purchased and plans drawn up. Construction is underway on the Rutherford site and is expected to be completed by April or May 2005. The development application and re-zoning for the Wollongong site at Unanderra has been passed by local council and is now with the State Government for the necessary approvals there. It is expected that these will be finalised by November this year and we hope construction will begin by April 2005. Site plans for Yagoona were submitted to Bankstown City Council.

Special projects manager, Karen Thorne has been critical in the massive project of planning of all these shelters.

The manager of shelters in NSW, Russell Cox ensures that all our shelters are working in compliance with legislation, RSPCA policy and that they meet the standards of animal care that are demanded of us. The implementation of animal assessment and behaviour programs at shelters has improved our ability to select the animals most appropriate for re-homing and allowed us to work on the problems of other animals.

Euthanasia is still a problem for us – but an understanding that not all animals can be re-homed and a responsible attitude to the selection of animals for re-homing is the best way to maintain our "open door" policy to all animals needing shelter. As there is no compulsory desexing legislation, over-breeding continues and the euthanasia of animals will always be a sad fact of our work in animal welfare.

This year we maintained our commitment to RSPCA branches to keep them informed. Our annual branch conference was held in Armidale and was attended by 54 branch members. Branch visits by senior staff continued and our information technology staff provided network coverage for shelters and branches. This has greatly improved their potential to re-home animals by listing them online.

**- Sue Patchett**  
State co-ordinator, shelters and branches



RSPCA NSW CEO Bernie Murphy with MP for Maitland John Price and RSPCA NSW President Andrew Wozniak watch the first sod being turned at Rutherford.

Since the introduction of the Companion Animals Act there has been a steady decline in the number of dogs received by our shelters; however the same cannot be said for our other companion animal, the cat.

This year, branch volunteers and shelter staff have seen an increase of over 2000 cats come into their care; this is almost entirely due to councils not managing stray cats. Where a stray dog on a busy road is rescued from harm's way by a council ranger, a cat in the same danger is left to fend for itself. It seems it is someone else's responsibility to bring stray cats to the RSPCA.

Only 780 of the 13,580 cats which found their way to the RSPCA were microchipped. This compares to 4918 microchipped dogs. Clearly the Companion Animals Act is not working for cats.

This inequity results in few cats being reclaimed - only 213 cats were reclaimed compared to 3310 canine companions who were reunited with their carers.



During the last 12 months all of the Society's retail and support shops continued to raise much needed funds for the abandoned, neglected and unwanted animals in their areas.

The two retail shops in the Blue Mountains were both computerised to make stock-taking easier at the end of the financial year.

The support shop in Port Macquarie had to move from their premises in Gordon Street and a new location was found closer to town in Short Street. This shop is now making more money despite the small increase in rent.

The Albury Branch of the RSPCA has found a new location for their shop. The new shop is in Smollet Street, where there is ample parking and pedestrian traffic.

Support shops in Wollongong, Central Coast and Tweed Heads continue as they have in previous years with thanks going to all the volunteers for their support and dedication over the past 12 months.

During the next 12 months, I will be looking at new cash register systems for the shops to make their auditing processes easier.

Once again, I would like to thank all the volunteers who run these shops for their help and dedication in raising money for the many animals that come into the care of our branches and shelters. It is their assistance that helps these animals.

- Kylie Armson  
Retail business and property manager

### Support shops

#### Port Macquarie income

2002/2003	\$38,630.41
2003/2004	\$32,725.32

#### Wollongong income

2002/2003	\$25,434.00
2003/2004	\$22,685.00

#### Central Coast income

2002/2003	\$57,326.90
2003/2004	\$73,497.00

#### Tweed Heads income

##### Florence Street

2002/2003	\$16,124.65
2003/2004	\$14,436.10

##### Boyd Street

2002/2003	\$27,974.75
2003/2004	\$43,591.20

#### Retail shops

##### Springwood

2002/2003	\$37,406.65
2003/2004	\$46,344.55

##### Katoomba

2002/2003	\$56,957.74
2003/2004	\$73,971.71



Elizabeth Wells, RSPCA Blue Mountains shop volunteer



## Annual statistics for New South Wales:

Albury, Armidale, Blue Mountains, Broken Hill, Central Coast, Coffs Harbour, Kempsey, Newcastle, Nowra, Orange, Port Macquarie, Taree, Tweed Heads, Ulladulla, Wollongong and Yagoona.

### Total for NSW 2003 - 2004

#### Dogs

Total received	18,006
Surrenders	9146
Strays	8094
Inspectors' cases	709
Stray DOA	57

Reclaimed	3310
Adopted	6053
Relocated to another RSPCA shelter	687
Euthanased for veterinary reasons	2919
Euthanased for shelter reasons	4073

#### Dogs received who were:

Under six months	4298
Desexed	1739
Microchipped	4918
Female	6265

Other animals - total received	3751
Total animals cared for by RSPCA NSW:	35,337

#### Cats

Total received	13,580
Surrenders	4615
Strays	8556
Inspectors' cases	343
Stray DOA	66

Reclaimed	213
Adopted	4242
Relocated to another RSPCA facility	283
Euthanased for veterinary reasons	4216
Euthanased for shelter reasons	3694

#### Cats received who were:

Under six months	7668
Desexed	649
Microchipped	780
Female	5241

#### Explanatory notes:

Euthanased for veterinary reasons refers to animals who were euthanased due to injuries or disease or who were aged and infirm.

Euthanased for shelter reasons refers to animals who were euthanased for behaviour problems such as aggression or due to lack of kennel room and resources.



Jessica Rivett at Yagoona shelter

This year our animal statistics reflect the Society's unity as one RSPCA NSW. Branch and shelter statistics are combined to show the Statewide picture of our care for animals.

For the first time, this year we have been able to quantify what we all knew to be true; the majority (56%) of the cats we care for are kittens, in fact 7668 of the total 13,580 cats were kittens.

These figures will help us to identify where our resources can be most effectively used; for example: by focusing desexing programs on cats, the forgotten companion animal, we will be better able to improve their welfare.

The reasons for euthanasia have also been quantified this

year, highlighting that 48% of the animals are euthanased for medical reasons. The rest are euthanased because of lack of resources or behaviour problems such as aggression.

To decrease the rates of euthanasia due to behaviour problems, we have implemented behaviour rehabilitation programs at our shelters with the guidance of veterinary animal behaviour consultant Robert Stabler.

And to maximise adoption rates across the State we have initiated both Animals Online ([www.rspcansw.org.au](http://www.rspcansw.org.au)) and the Relocation Program where we have successfully relocated an additional 970 animals this year for adoption.

### RSPCA and Local Government – working together

Over the past 18 months, the RSPCA has been liaising with local councils across the State to operate their animal pounds.

The aim is to improve the welfare of stray animals who are taken to pounds by council rangers or members of the public, to decrease the rate of euthanasia of these animals and to increase their re-homing potential.

The RSPCA operates pounds in line with the provisions of the NSW Department of Agriculture’s Draft Code of Practice for the Accommodation or Shelter of Animals.

This year, we have acquired two pounds, Gosford and Maitland, making eight pounds now managed by the RSPCA. The other six are Orange, Blue Mountains, Lake Macquarie, Newcastle, Hastings and Coffs Harbour.



A disappointment this year, was the loss of the contract to manage Tweed Shire Pound and establish an adjoining mini-shelter. Opposition from local animal rights groups in the area meant this opportunity was denied to us. A media campaign was implemented, however, Council retained the pound operations. If the opportunity presents itself at a later date, the RSPCA will re-tender for this service.

We have further renegotiated contracts with Orange City Council and Lake Macquarie City Council and are currently in negotiation with two other councils to renew contracts. Discussions are continuing with councils in a number of other regional areas and if successful, will increase the RSPCA’s presence in rural locations, where there are often fewer resources available for animal welfare than in larger centres.

The presence of RSPCA-operated pounds and mini-shelters in these areas will help our regional inspectors, provide educational opportunities and potentially increase re-homing rates.

As a consequence of our contract with Gosford City Council, the pound will be refurbished. We hope to see kennel capacity double as a result of this refurbishment, which is being planned in conjunction with the RSPCA.

Gosford, Hastings and Maitland council pounds are now staffed by RSPCA employees, with other pound services, such as microchipping and companion animal registration, carried out by these councils and in nearby RSPCA shelters. Maitland City Council services will be transferred to the new RSPCA site at Rutherford when construction is complete in 2005.

We actively seek volunteers to assist in RSPCA-operated pounds and a training program has been implemented to ensure compliance with Occupational Health and Safety regulations and to increase the knowledge and skills of volunteers.

**- Toni O’Byran**  
Council liaison co-ordinator – impound operations

### During the 2003/2004 year, the RSPCA looked after:

Pound	Dogs	Cats
Coffs Harbour	485	311
Blue Mountains	549	148
Gosford	655	-
Hastings	914	82
Orange	1632	852
Lake Macquarie	1208	4
Maitland	215	-
Newcastle	1285	158

Explanatory note: Some of these pounds have been operated by the RSPCA for longer than others.



Monica Ojeda caring for livestock

# THE ROYAL SOCIETY FOR THE PREVENTION OF CRUELTY TO ANIMALS NEW SOUTH WALES

## REPORT OF THE DIRECTORS

The Directors of RSPCA NSW present their report on the financial statements of the Society for the year ended 30 June 2004

### Directors

The Directors in office at the date of this report are:

Mr Andrew Wozniak, President  
Mr Graham Hall, Vice President  
Mrs Dulcie Goldstien, Vice President  
Dr Peter Wright, Treasurer  
Ms Wendy Barrett, Director  
Dr Alick Lascelles, Director  
Mr Paul O'Donnell, Director  
Mrs Colleen Woods, Director  
Mrs Carol Youdan, Director

### Activities

The principal activity of the Society in the course of the financial year was the prevention of cruelty to animals.

### Result

The net surplus of the Society for the year was \$8,830,757. Capital works contingency fund of \$27 million has been established to fund the construction of the Newcastle and Wollongong Shelters; the Yagoona staged Shelter Development and the Somersby Cattery.

### Dividends

The Society is a non-profit organisation and no dividends are payable.

### Review of Operations

During the financial year, the Society conducted the activities described above resulting in the surplus as shown above.

### After Balance Date Events

There has not arisen since the end of the financial year any matter or circumstance that has significantly affected or may affect the operations of the Society in subsequent financial years other than major repairs to Yagoona because of structural damage as outlined in the financial statements.

### Likely Developments and Results

It is the expectation of the Directors that the Society will further expand its activities where possible in the prevention of cruelty to animals and it is expected that the cost of these operations will increase but will be met from the traditional sources of income available to the Society.

### Particulars of Directors

The following particulars are given in respect of each of the Directors of the Society.

#### Mr A Wozniak LLB (Accredited Specialist in Criminal Law)

Mr Wozniak is currently president and has served on the NSW Board for eight years. Mr Wozniak is a legal advocate for the RSPCA, a solicitor and life member of the Society.

#### Mr G Hall

Mr Hall has been an RSPCA Board member for over 20 years. Mr Hall is a grazier and a partner in a family property near Young raising shorthorn cattle, fine wool merino sheep and crops.

#### Mrs D Goldstien

Mrs Goldstien was elected to the Board in 1996. A professional dog trainer, Mrs Goldstien is a director of the Annangrove Dog Training Centre.

#### Dr P Wright BVSc, Grad Dip Ag Ec

Dr Wright is a veterinarian who runs his own practice at Goulburn, NSW and treats domestic pets, livestock, wildlife and other exotic species. Dr Wright has a long involvement with animal care groups including WIRES and in assisting the local RSPCA inspector.

#### Dr Alick Lascelles MVSc, PhD, FACVSc

After graduating in veterinary science, Dr Lascelles undertook a Master's degree at Sydney University and a PhD in the Department of Experimental Pathology at the John Curtin School of Medical Research in preparation for a career in scientific research.

#### Mrs C Woods

Former vice president and State treasurer, Mrs Woods held the position of secretary to the executive director of RSPCA NSW before her resignation in 1993.

#### Mr P O'Donnell LLB (Hons), Barrister of Supreme Court of NSW

Mr O'Donnell was elected to the Board in October 1998. A Barrister at Law, Mr O'Donnell is particularly interested in the Society's efforts to respond to animal cruelty.

(continued next page)

## THE ROYAL SOCIETY FOR THE PREVENTION OF CRUELTY TO ANIMALS NEW SOUTH WALES

### Ms Wendy Barrett

Ms Wendy Barrett has a Master of Business, Corporate Director Diploma and an Executive Master's of Business Administration. She is a member of the NSW Fire Brigade Senior Executive Service, requiring her to lead and manage significant improvements in community orientated services. She is a former president of the RSPCA NSW Auxiliary.

### Mrs C Youdan

Mrs Youdan has had the roles of president, vice president and secretary of the Taree branch for over 14 years. A company director, Mrs Youdan was elected to the Board in 1996.

### Directors' Benefits

Since the end of the previous financial year, no Director of the Society has received or has become entitled to receive a benefit by reason of a contract made by the Society or a related corporation with him or her or with a firm of which he or she is a member or with a company in which he or she has a substantial financial interest, other than Mr O'Donnell as a Barrister and Mr Wozniak, who is a member of a firm that provides legal services to the Society. Dr Wright and Dr Lascelles, at times, provide veterinary and consulting services.

### Insurance of Officers

During the financial year, the Society paid a premium of \$11,605 to insure certain officers of the Society.

The officers of the Society covered by the insurance policy include any past, present and future Director, Secretary, Officer, or Employee of the Society.

The liabilities insured include costs and expenses that may be incurred in defending civil or criminal proceedings that may be brought against the officers in their capacity as officers of the Society.

Signed this 20th day of September 2004 in accordance with a resolution of the Directors.



Mr A Wozniak  
President



Dr P Wright  
Treasurer

### Directors' Attendance

Director	25/7	29/8	26/9	31/10	28/11	12/12	30/1	27/2	26/3	30/4	24/5	25/6
Wozniak	X	X	X	X	X	X	X	X	X	X	X	X
Goldstien	X	X	X	A	X	X	X	X	X	X	A	X
Hall	X	X	X	A	X	X	X	X	A	X	X	A
Wright	X	X	X	X	X	X	X	X	X	A	X	X
O'Donnell	X	X	X	X	X	X	A	X	X	X	X	X
Youdan	X	X	X	X	X	X	X	X	X	X	X	X
Woods	X	X	X	A	X	X	X	X	X	X	X	X
Lascelles	X	X	X	X	X	X	X	A	A	X	-	-
Barrett	-	-	-	-	X	X	X	X	A	X	X	X

X denotes Director present      A denotes Director gave apology

**THE ROYAL SOCIETY FOR THE PREVENTION OF CRUELTY TO ANIMALS  
NEW SOUTH WALES**

**STATEMENTS OF FINANCIAL PERFORMANCE  
for the year ended 30 June 2004**

	Notes	2004 \$	2003 \$
Revenue from ordinary activities	2	<u>38,114,249</u>	<u>25,545,051</u>
Operating deficit before legacies and grants		<u>(7,766,183)</u>	<u>(7,167,558)</u>
Legacies - cash and shares		16,384,940	5,755,401
Legacies - properties		0	800,000
Government grant		<u>212,000</u>	<u>711,496</u>
<b>Surplus/(deficits) for the year</b>		<b>8,830,757</b>	<b>99,339</b>
Net (decrease)/increase in asset revaluation reserve		4,030,909	(687,299)
Accumulated Funds at beginning of the year		<u>26,299,940</u>	<u>26,120,121</u>
		39,161,606	25,532,161
Transfers from/(to) Capital Revaluation Reserve		(4,030,909)	687,299
Transfers to/from Branches	5	<u>(73,381)</u>	<u>80,480</u>
<b>Accumulated Funds at end of the year</b>		<b><u>35,057,316</u></b>	<b><u>26,299,940</u></b>

**STATEMENTS OF FINANCIAL POSITION  
as at 30 June 2004**

<b>Current Assets</b>			
Cash	6	1,169,528	430,722
Receivables	7	460,490	166,646
Inventories	8	386,150	356,073
Other Financial Assets	9	2,025	41,635
Other	10	390,307	2,094,602
<b>Total Current Assets</b>		<b><u>2,408,500</u></b>	<b><u>3,089,678</u></b>
<b>Non-Current Assets</b>			
Other Financial Assets	9	36,728,446	28,361,486
Property, Plant and Equipment	11	13,487,555	12,736,323
<b>Total Non-Current Assets</b>		<b><u>50,216,001</u></b>	<b><u>41,097,809</u></b>
<b>Total Assets</b>		<b><u>52,624,501</u></b>	<b><u>44,187,487</u></b>
<b>Current Liabilities</b>			
Payables	12	1,225,403	941,968
Provisions	13	1,242,483	1,122,878
Interest-Bearing Liabilities	14	746,982	5,501,293
<b>Total Current Liabilities</b>		<b><u>3,214,868</u></b>	<b><u>7,566,139</u></b>
<b>Total Liabilities</b>		<b><u>3,214,868</u></b>	<b><u>7,566,139</u></b>
<b>Net Assets</b>		<b><u>49,409,633</u></b>	<b><u>36,621,348</u></b>
<b>Members' Equity and Specific Funds</b>			
Reserves	19	12,784,497	8,753,588
Accumulated Funds		35,057,316	26,299,940
Specific Funds	15	1,567,820	1,567,820
<b>Total Equity and Funds</b>		<b><u>49,409,633</u></b>	<b><u>36,621,348</u></b>

The accompanying Notes 1 to 28 form part of these financial statements

**THE ROYAL SOCIETY FOR THE PREVENTION OF CRUELTY TO ANIMALS  
NEW SOUTH WALES**

**STATEMENT OF CASH FLOWS  
for the year ended 30 June 2004**

	Notes	2004 \$	2003 \$
<b>Cash Flow from Operating Activities</b>			
Receipts from members and customers		8,423,890	7,558,155
Payments to suppliers and employees		<u>(19,623,605)</u>	<u>(17,521,385)</u>
		(11,199,715)	(9,963,230)
Donations received		729,928	696,088
Legacies received		17,483,116	4,913,401
Rent received		501,604	532,549
Interest received		159,287	66,741
Dividends received		1,512,982	334,346
Government subsidy		212,000	711,496
Subscriptions		67,604	76,009
<b>Net Cash Inflow from Operating Activities</b>	22(b)	<u><b>9,466,806</b></u>	<u><b>(2,632,600)</b></u>
<b>Cash Flow from Investing Activities</b>			
Proceeds from the sale of property, plant and equipment		5,122,984	6,423,631
Payment for property, plant and equipment		<u>(5,096,089)</u>	<u>(8,826,388)</u>
Proceeds from redemption of investments		5,347,979	4,622,899
Payment for investments		<u>(9,518,171)</u>	<u>(5,074,507)</u>
<b>Net Cash Inflow(Outflow) from Investing Activities</b>		<u><b>(4,143,297)</b></u>	<u><b>(2,854,365)</b></u>
<b>Cash flow from Financing Activities</b>			
Proceeds from borrowings		-	4,584,703
Repayment of borrowings		<u>(4,584,703)</u>	-
<b>Net Cash Inflow(Outflow) from Financing Activities</b>		<u><b>(4,584,703)</b></u>	<u><b>4,584,703</b></u>
<b>Net Increase/(Decrease) in Cash Held</b>		738,806	(902,262)
Cash at beginning of year		430,722	1,332,984
<b>Cash at end of year</b>	22(a)	<u><b>1,169,528</b></u>	<u><b>430,722</b></u>

The accompanying Notes 1 to 28 form part of these financial statements

# THE ROYAL SOCIETY FOR THE PREVENTION OF CRUELTY TO ANIMALS NEW SOUTH WALES

## NOTES TO AND FORMING PART OF THE FINANCIAL STATEMENTS for the year ended 30 June 2004

### 1. STATEMENT OF ACCOUNTING POLICIES

The financial report is a general purpose financial report that has been prepared in accordance with Accounting Standards, Urgent Issues Group Consensus Views, other authoritative pronouncements of the Australian Accounting Standards Board and the Corporation Act 2001. The financial report has been prepared on the basis of historical costs and do not take into account changing money values or, except where stated, current valuations of non-current assets. Cost is based on the fair values of the consideration given in exchange for assets. The accounting policies have been consistently applied, unless otherwise stated.

The following is a summary of the significant accounting policies adopted by the Society in preparation of the financial statements.

#### (a) Principles of Consolidation

The financial statements comprise the accounts of Society and all its Branches. The financial statements are inclusive of Branch balances at balance date and transactions during the year, after elimination of branches and transactions between Branches and Head Office. Listing of Branches is shown in note 23.

#### (b) Property, Plant and Equipment

Property acquired by legacy is brought to account at Directors' Valuation at date of acquisition otherwise, property, plant and equipment are brought to account at cost or independent or directors valuation, less, where applicable, any accumulated depreciation or amortisation.

The depreciable amount of all property, plant and equipment including buildings and capitalised lease assets, but excluding freehold land, is depreciated over their useful lives commencing from the time the asset is held ready for use. Leasehold improvements are amortised over the shorter of either the unexpired period of the lease or the estimated useful lives of the improvements.

Gains or losses in respect of the disposal of property, plant and equipment are taken up at the time of disposal and included in the income and expenditure statement in the item surplus on disposal of property, plant and equipment.

The depreciation rates used for each class of depreciable assets are:

Class of Fixed Assets	Depreciation Rate
Buildings	5%
Animal Shelters	5%
Motor Vehicles	20%
Plant, Furniture and Equipment	10-20%

#### (c) Investments and Recognition of Income from Investments

##### Shares in Listed Companies

Shares in listed companies are brought to account at market value.

##### Unit Trusts

Unit trusts are brought to account at market value where acquired by legacy, otherwise at cost. Distributions are brought to account as they are received.

## 1. STATEMENT OF ACCOUNTING POLICIES (continued)

### **Bank Deposits**

Bank deposits are brought to account at cost. Interest is brought to account on an accrual basis. Investments are stated at the lower of cost and net realisable value. Where there has been a significant diminution in the value of an investment a write-down to the realisable value is made.

Gains and losses in respect of the disposal of investments are taken up at the time of disposal and included in the Income and Expenditure Statement in the item Surplus on disposal of non-current assets.

### **(d) Inventories**

Inventories are valued at the lower of cost and net realisable value.

### **(e) Employee Entitlements**

Provision is made for the Society's liability for annual leave and long service leave at balance date. Long service leave is accrued in respect of all employees with more than 5 years service with the Society. Contributions are made by the Society to an employee superannuation fund and are charged as expenses when incurred. The Society has no legal obligation to cover any shortfall in the fund's obligations to provide benefits to employees on retirement. Sick leave, which is not vesting, is not expected to give rise to future expenditures in excess of employees' future entitlements. Accordingly, and consistent with the recommendations of the Australian accounting profession's Urgent Issues Group, no provision is made at year ended for sick leave.

### **(f) Income Tax**

The Society is exempt from Income Tax.

### **(g) Specific Funds**

Income and expenditure relating to Specific Funds is brought to account through the Income and Expenditure Statement. An amount equivalent to the Income and Expenditure is transferred to/from the Specific Fund from/to Accumulated funds.

Capital expenditure incurred within the terms of the Specific Funds is capitalised in the financial statements of the Society as Property, plant and equipment and depreciated accordingly. An amount equivalent to the expenditure is transferred from the Specific Fund to Accumulated funds.

### **(h) Cash**

For the purpose of the statement of cash flows, cash includes cash on hand and at call deposits with banks and financial institutions.

### **(i) Recoverable Amount of Non-Current Assets**

Non-current assets are not revalued to an amount above their recoverable amount, and where carrying values exceed this recoverable amount assets are written down. In determining recoverable amount the expected net cash flows have not been discounted to their present values using a market risk adjusted discount rate.

### **(j) Comparative Amounts**

Where required, the figures for the previous year are reclassified to facilitate comparison.



**THE ROYAL SOCIETY FOR THE PREVENTION OF CRUELTY TO ANIMALS  
NEW SOUTH WALES**

**NOTES TO AND FORMING PART OF THE FINANCIAL STATEMENTS  
for the year ended 30 June 2004**

	Notes	2004 \$	2003 \$
<b>2. INCOME</b>			
Donations		729,928	696,088
Legacies		16,384,940	6,555,401
Interest received		134,217	91,811
Dividends received		1,203,619	949,236
Proceed on sale of non-current assets		10,387,853	8,375,371
Membership subscriptions		67,604	76,009
Fees for service - animals		6,009,400	5,448,679
Sales - other		1,113,621	721,877
Grant - NSW State Government		212,000	711,496
Rent		501,604	532,549
Court fines and costs		139,328	104,417
Fundraising		911,790	819,061
Sundry income		318,345	463,056
		<u>38,114,249</u>	<u>25,545,051</u>

**3. SURPLUS FOR THE YEAR**

The surplus for the year has been determined after:

(a) Charging as expenses

Depreciation		1,021,458	871,649
Amortisation		185,442	192,642
Auditors' remuneration	21	58,000	58,670
Bad debts written off		16,770	61,123
Provision for employee entitlements		<u>119,606</u>	<u>333,029</u>

(b) Crediting as income

Interest revenue - other persons		134,217	91,811
Dividend revenue - other corporations		1,203,619	949,236
Surplus on disposal of non current assets		2,135,119	2,635,422
Grant - NSW State Government		<u>212,000</u>	<u>711,496</u>

**THE ROYAL SOCIETY FOR THE PREVENTION OF CRUELTY TO ANIMALS  
NEW SOUTH WALES**

	Support Services		Shelters		Clinics		Inspection
	2004	2003	2004	2003	2004	2003	2004
	\$	\$	\$	\$	\$	\$	\$
<b>Income</b>							
Donations	482,365	448,366	115,696	48,160	-	-	13,833
Fundraising - gross	753,668	672,743	-	-	-	-	-
Government grant	-	-	-	-	-	-	212,000
Investments	1,337,836	980,476	-	-	-	-	-
Legacies	16,376,090	6,251,283	-	-	-	-	-
Rent received	460,752	500,912	21,185	10,970	-	-	-
Fees for service - animals	13,699	200,683	2,758,751	2,003,803	2,780,978	2,733,286	-
Internal vet/shelters fees	-	-	-	-	1,798,786	1,698,964	-
Internal vet/inspectors' fees	-	-	-	-	275,099	374,883	-
Internal shelter/inspectors' fees	-	-	268,355	89,252	-	-	-
Internal shelter/clinic	-	-	46,224	-	-	-	-
Sales - other	717,028	312,450	292,159	268,307	321	246	1,649
Court fines and costs	-	-	-	-	-	-	139,328
Subscriptions	44,486	56,741	-	131	-	-	-
Surplus on disposal of non-current assets	1,803,301	2,410,493	-	-	23,442	7,112	308,376
Other	84,419	73,303	99,902	136,131	-	-	-
<b>Total Income</b>	<b>22,073,644</b>	<b>11,907,450</b>	<b>3,602,272</b>	<b>2,556,754</b>	<b>4,878,626</b>	<b>4,814,491</b>	<b>675,186</b>
<b>Expenditure</b>							
Animal related							
Food	-	-	189,146	147,003	1,120	8,114	30,898
Medicines	-	-	190,116	134,179	1,094,146	1,225,598	1,438
Veterinary expenses	-	-	193,233	162,400	4,442	2,329	60,432
Internal vet/shelters fees	-	-	1,798,786	1,698,964	-	-	-
Internal vet/inspectors' fees	-	-	-	-	-	-	275,099
Internal shelter/inspectors' fees	-	-	-	-	-	-	268,355
Internal shelter/clinic	-	-	-	-	46,224	-	-
Laboratory	-	-	-	-	65,700	56,247	-
Other	-	-	-	28,715	-	39,141	-
Employment expenses	1,834,810	1,439,430	4,684,594	4,194,541	2,733,912	2,520,037	1,682,009
Investments	-	211,473	-	-	-	-	-
Plant and building expenses	452,379	195,757	-	-	12,414	4,500	23,710
Occupancy costs	294,449	59,280	-	-	-	-	-
Purchases merchandise	189,885	355,495	238,449	79,449	-	-	-
Fundraising	376,673	277,141	-	-	-	-	-
Repairs and maintenance	102,762	254,470	210,103	239,455	18,473	53,650	7,282
Membership services	96,561	158,362	-	-	-	-	-
Receivable costs	11,437	3,660	-	-	5,566	5,023	-
Administration							
Board expenses	28,016	71,537	-	-	-	-	-
Legal	65,115	29,347	-	-	-	-	454,452
Communication	123,066	178,748	104,209	47,551	28,722	33,951	165,976
Insurance	46,204	104,019	91,132	18,933	16,426	8,388	8,213
Motor vehicle	137,532	172,101	179,256	99,423	13,698	10,650	407,571
Auditors' remuneration	57,000	55,000	-	-	-	-	-
Computer expenses	58,287	47,680	14,302	52,222	15,069	12,606	6,116
RSPCA Australia levy	22,736	12,855	-	-	-	-	-
Other	1,666,647	1,387,169	878,520	742,944	176,025	185,731	510,671
<b>Total Expenditure</b>	<b>5,563,559</b>	<b>5,013,524</b>	<b>8,771,846</b>	<b>7,645,779</b>	<b>4,231,937</b>	<b>4,165,965</b>	<b>3,902,222</b>
<b>Surplus / -Deficit</b>	<b>16,510,085</b>	<b>6,893,926</b>	<b>-5,169,574</b>	<b>-5,089,025</b>	<b>646,689</b>	<b>648,526</b>	<b>-3,227,036</b>

NOTES TO AND FORMING PART OF THE FINANCIAL STATEMENTS for the year ended 30 June 2004

4. DETAILED INCOME AND EXPENDITURE STATEMENT for the year ended 30 June 2004

total	RSPCA NSW Total		Branches, Auxiliary		Consolidation Adjustment		RSPCA NSW incl Branches, Auxiliary	
	2004	2003	2004	2003	2004	2003	2004	2003
	\$	\$	\$	\$	\$	\$	\$	\$
	36,000	611,894	532,526	118,034	163,562	-	729,928	696,088
	-	753,668	672,743	158,122	146,318	-	911,790	819,061
	711,496	212,000	711,496	-	-	-	212,000	711,496
	-	1,337,836	980,476	-	60,571	-	1,337,836	1,041,047
	-	16,376,090	6,251,283	8,850	304,118	-	16,384,940	6,555,401
	7,000	481,937	518,882	19,667	13,667	-	501,604	532,549
	-	5,553,428	4,937,772	455,972	510,907	-	6,009,400	5,448,679
	-	1,798,786	1,698,964	-	-	-1,798,786	-1,698,964	-
	-	275,099	374,883	-	-	-275,099	-374,883	-
	-	268,355	89,252	-	-	-268,355	-89,252	-
	-	46,224	-	-	-	-46,224	-	-
	24,151	1,011,157	605,154	102,464	116,723	-	1,113,621	721,877
	104,417	139,328	104,417	-	-	-	139,328	104,417
	-	44,486	56,872	23,118	19,137	-	67,604	76,009
	217,568	2,135,119	2,635,173	-	248	-	2,135,119	2,635,421
	-	184,321	209,434	134,024	253,622	-	318,345	463,056
	1,100,632	31,229,728	20,379,327	1,020,251	1,588,873	-2,388,464	-2,163,099	29,861,515
	66,711	221,164	221,828	48,187	50,657	-	269,351	272,485
	4,832	1,285,700	1,364,609	445	3,067	-	1,286,145	1,367,676
	93,513	258,107	258,242	425,899	389,041	-	684,006	647,283
	-	1,798,786	1,698,964	-	-	-1,798,786	-1,698,964	-
	374,883	275,099	374,883	-	-	-275,099	-374,883	-
	89,252	268,355	89,252	-	-	-268,355	-89,252	-
	-	46,224	-	-	-	-46,224	-	-
	-	65,700	56,247	-	-	-	65,700	56,247
	-	-	67,856	-	-	-	-	67,856
	1,543,947	10,935,325	9,697,955	2,467	306,238	-	10,937,792	10,004,193
	-	-	211,473	-	-	-	-	211,473
	51,066	488,503	251,323	-	-	-	488,503	251,323
	-	294,449	59,280	-	-	-	294,449	59,280
	-	428,334	434,944	35,679	26,566	-	464,013	461,510
	-	376,673	277,141	39,424	72,038	-	416,097	349,179
	36,733	338,620	584,308	42,346	32,760	-	380,966	617,068
	-	96,561	158,362	4,322	3,960	-	100,883	162,322
	-	17,003	8,683	-	-	-	17,003	8,683
	-	28,016	71,537	-	-	-	28,016	71,537
	359,519	519,567	388,866	-	-	-	519,567	388,866
	209,750	421,973	470,000	26,832	29,498	-	448,805	499,498
	6,774	161,975	138,114	419	86	-	162,394	138,200
	435,247	738,057	717,421	3,775	11,835	-	741,832	729,256
	-	57,000	55,000	1,000	3,670	-	58,000	58,670
	14,302	93,774	126,810	-	-	-	93,774	126,810
	-	22,736	12,855	-	-	-	22,736	12,855
	573,418	3,231,863	2,889,262	318,863	254,230	-	3,550,726	3,143,492
	3,859,947	22,469,564	20,685,215	949,658	1,183,646	-2,388,464	-2,163,099	21,030,758
	-2,759,315	8,760,164	-305,888	70,593	405,227	-	8,830,757	99,339

**THE ROYAL SOCIETY FOR THE PREVENTION OF CRUELTY TO ANIMALS  
NEW SOUTH WALES**

**NOTES TO AND FORMING PART OF THE FINANCIAL STATEMENTS  
for the year ended 30 June 2004**

	Notes	2004 \$	2003 \$
<b>5. TRANSFERS TO ACCUMULATED FUNDS</b>			
Transfer to/from Branches		<u>73,381</u>	<u>80,480</u>
<b>6. CASH ASSETS</b>			
Current			
Cash at bank		1,132,778	393,057
Cash on hand		36,750	37,665
		<u>1,169,528</u>	<u>430,722</u>
<b>7. RECEIVABLES</b>			
Current			
Trade debtors		540,490	249,149
Provision for doubtful debts		(80,000)	(82,503)
		<u>460,490</u>	<u>166,646</u>
<b>8. INVENTORIES</b>			
Current			
Stock on hand		<u>386,150</u>	<u>356,073</u>
<b>9. OTHER FINANCIAL ASSETS</b>			
Current			
Bank Liquids		<u>2,025</u>	<u>41,635</u>
		<u>2,025</u>	<u>41,635</u>
Non-Current			
Bank term deposits		3,657,124	1,135,044
Listed Property Trusts at market value		6,490,996	4,363,274
Shares held at market value		25,629,876	22,092,952
Unlisted Trusts and Shares at market value		950,450	770,216
		<u>36,728,446</u>	<u>28,361,486</u>
During the year the Board has engaged Westpac Investment Management Pty Limited to manage the Society's investments and other cash and property trust funds.			
<b>10. OTHER</b>			
Current			
Sundry debtors and prepayments		<u>390,307</u>	<u>2,094,602</u>

**THE ROYAL SOCIETY FOR THE PREVENTION OF CRUELTY TO ANIMALS  
NEW SOUTH WALES**

**NOTES TO AND FORMING PART OF THE FINANCIAL STATEMENTS  
for the year ended 30 June 2004**

	Cost	Accumulated Depreciation/ Amortisation	Written Down Value
	\$	\$	\$
<b>11. PROPERTY, PLANT AND EQUIPMENT</b>			
Non-Current			
Land acquired by legacy - at Directors' valuation on acquisition	1,500,650	-	1,500,650
Land other - at cost	2,241,976	-	2,241,976
Buildings acquired by legacy - at Directors' valuation on acquisition	1,297,550	518,698	778,852
Buildings other - at cost	3,611,374	1,090,675	2,520,699
Animal Shelters - at cost			
Yagoona	2,728,645	2,143,050	585,595
Blue Mountains	153,000	67,880	85,120
Broken Hill	173,107	104,949	68,158
Coffs Harbour	1,067,153	605,825	461,328
Orange	94,670	94,670	-
Somersby	961,173	453,392	507,781
Capital structure in place	1,706,910	-	1,706,910
Motor Vehicles - at cost	2,796,241	273,527	2,522,714
Plant, Furniture and Equipment - at cost	2,451,278	1,943,506	507,772
	<u>20,783,727</u>	<u>7,296,172</u>	<u>13,487,555</u>

2004

Land acquired by legacy - at Directors' valuation on acquisition	1,500,650	-	1,500,650
Land other - at cost	2,322,776	-	2,322,776
Buildings acquired by legacy - at Directors' valuation on acquisition	1,404,920	460,283	944,637
Buildings other - at cost	3,750,517	1,085,564	2,664,953
Animal Shelters - at cost			
Yagoona	2,728,645	1,957,608	771,037
Blue Mountains	153,000	60,230	92,770
Broken Hill	173,107	97,749	75,358
Coffs Harbour	1,067,153	522,857	544,296
Newcastle	294,132	194,486	99,646
Orange	94,670	94,670	-
Somersby	961,173	405,333	555,840
Wollongong	29,611	15,261	14,350
Capital structure in place	437,251	-	437,251
Motor Vehicles - at cost	2,421,043	239,644	2,181,399
Plant, Furniture and Equipment - at cost	2,492,943	1,961,583	531,360
	<u>19,831,591</u>	<u>7,095,268</u>	<u>12,736,323</u>

2003

**THE ROYAL SOCIETY FOR THE PREVENTION OF CRUELTY TO ANIMALS  
NEW SOUTH WALES**

**NOTES TO AND FORMING PART OF THE FINANCIAL STATEMENTS  
for the year ended 30 June 2004**

	Notes	2004 \$	2003 \$
<b>12. PAYABLES</b>			
Current			
Trade creditors		1,225,403	941,968
		<u>1,225,403</u>	<u>941,968</u>
<b>13. PROVISIONS</b>			
Current			
Annual leave		850,293	774,052
Long service leave		392,190	348,826
		<u>1,242,483</u>	<u>1,122,878</u>
<b>14. INTEREST-BEARING LIABILITIES</b>			
Current			
Bushfire appeal funds		118,141	118,141
Drought appeal funds		29,578	29,578
Broken Hill appeal funds		2,743	2,743
Loans - capital works		-	4,584,703
Sundry accruals		596,520	766,128
		<u>746,982</u>	<u>5,501,293</u>
<b>15. SPECIFIC FUNDS</b>			
Legacy House Fund	16	1,221,384	1,221,384
RSPCA DiDi Redford Memorial Trust Fund	17	343,936	343,936
The Winifred & Maurice Neirous Trust Fund	18	2,500	2,500
		<u>1,567,820</u>	<u>1,567,820</u>

**THE ROYAL SOCIETY FOR THE PREVENTION OF CRUELTY TO ANIMALS  
NEW SOUTH WALES**

**NOTES TO AND FORMING PART OF THE FINANCIAL STATEMENTS  
for the year ended 30 June 2004**

	Notes	2004 \$	2003 \$
<b>16. LEGACY HOUSE FUND</b>			
The Fund was set aside for the future development of a shelter for Legacy animals			
Balance at end of year		<u>1,221,384</u>	<u>1,221,384</u>
<b>17. RSPCA DIDI REDFORD MEMORIAL TRUST FUND</b>			
The Fund was established to pay for surgery on cruelty cases, injured strays and unwanted animals			
Balance at beginning of the year		343,936	343,936
		<u>343,936</u>	<u>343,936</u>
<b>18. THE WINIFRED AND MAURICE NEIROUS TRUST FUND</b>			
The Fund was established to assist in the purchase of medicines for RSPCA animals from the income earned			
Balance at end of year		<u>2,500</u>	<u>2,500</u>
<b>19. RESERVES</b>			
Balance 1 July 2003		8,753,588	9,440,887
Increment on revaluation of freehold land and buildings		-	29,000
(Decrement)/Increment on revaluation of shares and trusts		4,030,909	(716,299)
Balance at end of year		<u>12,784,497</u>	<u>8,753,588</u>

**THE ROYAL SOCIETY FOR THE PREVENTION OF CRUELTY TO ANIMALS  
NEW SOUTH WALES**

**NOTES TO AND FORMING PART OF THE FINANCIAL STATEMENTS  
for the year ended 30 June 2004**

	Notes	2004 \$	2003 \$
<b>20. REMUNERATION OF DIRECTORS</b>			
The Directors receive no remuneration from the Society			
<b>21. AUDITOR'S REMUNERATION</b>			
Auditing or reviewing the financial statements:			
Remuneration of the Society auditor		57,000	55,000
Remuneration of other auditors		1,000	3,670
Other services		-	-
		<u>58,000</u>	<u>58,670</u>
<b>22. CASH FLOW INFORMATION</b>			
(a) Reconciliation of Cash			
For the purposes of this statement of cash flows, cash includes cash on hand and cash at banks or financial institutions			
Cash at the end of the year is included in the balance sheet as:			
Cash		<u>1,169,528</u>	<u>430,722</u>
(b) Reconciliation of Cash Flows from Operations with Operations with profits from ordinary activities			
Profits from ordinary activities		8,830,757	99,339
Non-cash flows from operations			
Depreciation		1,021,458	871,649
Amortisation		185,442	192,642
Profit on sale of non-current assets		(2,135,119)	(2,635,422)
Non cash legacies		(6,038)	-
Changes in assets and liabilities			
Increase (Decrease) in creditors		113,827	380,919
Increase (Decrease) in provisions		117,102	333,029
(Increase) Decrease in receivables		1,369,454	(1,901,750)
(Increase) Outflow in inventory		(30,077)	26,994
NET CASH IN (OUT)FLOW FROM OPERATING ACTIVITIES		<u>9,466,806</u>	<u>(2,632,600)</u>



**THE ROYAL SOCIETY FOR THE PREVENTION OF CRUELTY TO ANIMALS  
NEW SOUTH WALES**

**NOTES TO AND FORMING PART OF THE FINANCIAL STATEMENTS  
for the year ended 30 June 2004**

	Notes	2004 \$	2003 \$
<b>23. NET ASSETS</b>			
Net Assets as per audited Financial Statements prior to eliminations			
<b>Head Office</b>			
Yagoona	a	46,705,549	34,828,342
Newcastle	d	-	(913,866)
<b>Branches</b>			
Albury	a	113,273	126,397
Armidale	a	8,614	10,386
Bathurst	c	54,509	59,376
Blue Mountains	a	11,183	-
Broken Hill Branch	a	32,792	28,118
Central Coast	a	76,651	140,318
Cooma	a	29,707	17,166
Dubbo	a	71,521	71,615
Glen Innes	a	6,121	7,852
Goulburn and Southern Highlands	a	62,049	62,860
Inverell	a	19,079	3,007
Kempsey	a	43,858	37,660
Moree	a	40,462	30,554
Mudgee and District	a	5,512	5,589
Nambucca Valley	d	-	73,382
Nowra	a	10,174	4,836
Orange	a	19,047	17,272
Port Macquarie	a	287,947	315,930
Queanbeyan City	a	7,572	6,914
Taree	a	294,224	284,636
Tenterfield	a	2,320	2,481
Tweed Shire	b	570,876	530,725
Ulladulla and District	a	30,758	20,067
Wollongong	b	415,049	350,126
New South Wales Auxiliary	a	490,786	499,605
Non functional branches transferred to RSPCA NSW	d	-	(169,326)
		<u>49,409,633</u>	<u>36,452,022</u>

- a) Branches audited by the Society auditor  
b) Branches audited by the Branch auditors  
c) Branch was unaudited during the year  
d) Funds from non functional branch have been combined in the books of RSPCA NSW

**THE ROYAL SOCIETY FOR THE PREVENTION OF CRUELTY TO ANIMALS  
NEW SOUTH WALES**

**NOTES TO AND FORMING PART OF THE FINANCIAL STATEMENTS  
for the year ended 30 June 2004**

Notes	2004 \$	2003 \$
<b>24. CHARITABLE FUNDRAISING ACT 1991</b>		
The following additional information is provided in accordance with the requirements of the above Act		
<b>(a) Fundraising appeals</b>		
Head Office and Branches have conducted various fundraising appeals during the year. Details of aggregate gross income and total expenses of fundraising appeals, as disclosed in these financial statements were as follows:		
Gross proceeds from fundraising appeals		
Head Office		
Donations	611,894	532,526
Fundraising	753,668	672,743
Branches		
Donations	118,034	163,582
Fundraising	<u>158,122</u>	<u>146,315</u>
Gross proceeds from fundraising appeals	<u>1,641,718</u>	<u>1,515,166</u>
Costs of fundraising appeals		
Head Office	376,673	277,141
Branches	<u>39,424</u>	<u>72,036</u>
Total costs of fundraising appeals	<u>416,097</u>	<u>349,177</u>
Net surplus obtained from fundraising appeals	<u>1,225,621</u>	<u>1,165,989</u>

Fundraising generally conducted on an honorary basis by members of the Society supported by officers who are employed for specific inspectorial, veterinary or other necessary administrative purposes.

**THE ROYAL SOCIETY FOR THE PREVENTION OF CRUELTY TO ANIMALS  
NEW SOUTH WALES**

**NOTES TO AND FORMING PART OF THE FINANCIAL STATEMENTS  
for the year ended 30 June 2004**

	Notes	2004 \$	2003 \$
<b>24. CHARITABLE FUNDRAISING ACT 1991 (continued)</b>			
(b) Fundraising appeals conducted during the financial period - appeals, raffles, stalls, social functions.			
(c) Statement showing how funds received were applied to charitable purpose			
(1) Net surplus from fundraising appeals		<u>1,225,621</u>	<u>1,165,989</u>
(2) Net surplus was applied to the charitable purpose in the following manner			
Funding RSPCA Inspectors		3,358,768	3,415,812
Provision of animal shelter facilities for stray, abandoned and abused animals including accommodation, food, veterinary care etc		5,986,536	5,659,541
Veterinary clinic services		4,231,937	4,165,965
Expenditure on support services		<u>5,954,449</u>	<u>5,415,607</u>
		<b><u>19,531,690</u></b>	<b><u>18,656,925</u></b>
Shortfall		<u>18,306,069</u>	<u>17,490,936</u>
Government grant		212,000	711,496
Legacies		16,384,940	6,555,401
Investment income		1,337,836	1,041,047
Fees for service - animals		6,009,400	5,448,679
Other income - gross		<u>4,275,621</u>	<u>4,151,552</u>
Total income from other sources		<b><u>28,219,797</u></b>	<b><u>17,908,175</u></b>
(d) Comparisons by monetary figures and percentages			
Total cost of fundraising/gross income from fundraising		25.35%	23.04%
<b>\$416,097/\$1,641,718</b>			
(2003 \$349,177/\$1,515,166)			
Net surplus from fundraising/gross income from fundraising		74.65%	76.95%
<b>\$1,225,621/\$1,641,718</b>			
(2003 \$1,165,989/\$1,515,166)			
Total costs of services/total costs		69.51%	70.97%
<b>\$13,577,241/\$19,531,690</b>			
(2003 \$13,241,318/\$18,656,925)			
Total costs of services/total income received		48.97%	73.94%
<b>\$13,577,241/\$27,726,396</b>			
(2003 \$13,241,318/\$17,908,175)			

# THE ROYAL SOCIETY FOR THE PREVENTION OF CRUELTY TO ANIMALS NEW SOUTH WALES

## NOTES TO AND FORMING PART OF THE FINANCIAL STATEMENTS for the year ended 30 June 2004

### 25. SUPERANNUATION COMMITMENTS

A superannuation plan administered by Westpac Financial Services has been established by the Society for the provision of benefits to employees on retirement, death or disability. Benefits provided under the plan are based on contributions for each employee. The Society contributes the maximum level of employer superannuation support. Benefits provided under the plan are based on contributions for each employee under the Superannuation Guarantee Scheme. As benefits provided under the plan are based on contributions for each employee, no actuarial review is required.

### 26. RELATED PARTY TRANSACTIONS

(a) Transactions between related parties are on normal commercial terms and conditions no more favourable than those available to other parties. Mr O'Donnell and Mr A C Wozniak provide legal services to the Society. Dr Peter Wright provides casual veterinary services to the Society.

(b) Identification of Related Parties

The names of directors who held office during the financial year were as follows:

Mr Andrew Christopher Wozniak, President  
Mr John Graham Hall, Vice President  
Mrs Dulcie Goldstien, Vice President  
Dr Peter David Wright, Treasurer  
Mr Paul O'Donnell, Director  
Ms Wendy Maree Barrett, Director  
Mrs Colleen Woods, Director  
Mrs Carol Edna Youdan, Director  
Dr Alexander Kirk Lascelles, Director (until April 2004)

### 27. CONTINGENT LIABILITIES

(a) As a prosecuting agency there are contingent liabilities in respect of legal actions which maybe brought against the Society resulting from prosecutions already undertaken or about to be undertaken. Legal advice indicates that it is unlikely that any significant liability will arise but is estimated at \$1,000,000.

(b) Capital works contingency fund of \$27 million has been established to fund the construction of the Newcastle and Wollongong Shelters; the Yagoona staged Shelter Development and the Somersby Cattery.

### 28. FINANCIAL INSTRUMENTS

(a) Interest Rate Risk

The Society's exposure to interest rate risk, which is the risk that a financial instrument's value will fluctuate as a result of changes in market interest rates and the effective weighted average interest rates on classes of financial assets and financial liabilities is as follows:

**THE ROYAL SOCIETY FOR THE PREVENTION OF CRUELTY TO ANIMALS  
NEW SOUTH WALES**

**NOTES TO AND FORMING PART OF THE FINANCIAL STATEMENTS  
for the year ended 30 June 2004**

**28. FINANCIAL INSTRUMENTS (continued)**

(a) Interest Rate Risk (continued)

Weighted Average Effective Interest Rate	Floating Interest Rate	Fixed Interest Rate Maturing			Total
		Within Year	1 to 5 Years	Non-interest Bearing	
2004	2004	2004	2004	2004	2004
	\$	\$	\$	\$	\$
<b>Financial Assets</b>					
Cash	1,169,528	-	-	-	1,169,528
Receivables	-	-	-	460,490	460,490
Other financial asset	36,730,471	-	-	-	36,730,471
<b>Total Financial Assets</b>	<b>37,899,999</b>			<b>460,490</b>	<b>38,360,489</b>
<b>Financial Liabilities</b>					
Payables	-	-	-	1,225,403	1,225,403
Interest-bearing liabilities	-	-	-	746,982	746,982
<b>Total Financial Liabilities</b>	<b>-</b>	<b>-</b>	<b>-</b>	<b>1,972,385</b>	<b>1,972,385</b>

(b) Credit Risk

The maximum exposure to credit risk, excluding the value of any collateral or other security, at balance date to recognised financial assets is the carrying amount, net of any provisions for doubtful debts, as disclosed in the balance sheet and notes to the financial statements.

The Society does not have any material credit risk exposure to any single debtor or group of debtors under financial instruments entered into by the Society.

(c) Net Fair Values

The net fair values of listed investments have been valued at the quoted market bid price at balance date adjusted for transaction costs expected to be incurred. For unlisted investments net fair values have been based on the quoted redemption value at balance date.

For other assets and other liabilities the net fair value approximates their carrying value.

No financial assets and financial liabilities are readily traded on organised markets in standardised form other than listed investments.

Financial assets where the carrying amount exceeds net fair values have not been written down as the Society intends to hold these assets to maturity.

**THE ROYAL SOCIETY FOR THE PREVENTION OF CRUELTY TO ANIMALS  
NEW SOUTH WALES**

**NOTES TO AND FORMING PART OF THE FINANCIAL STATEMENTS  
for the year ended 30 June 2004**

	Notes	2004 \$	2003 \$
<b>28. FINANCIAL INSTRUMENTS (continued)</b>			
(c) Net Fair Values (continued)			
		Carrying Amount	Net Fair Value
<b>Financial Assets</b>			
Cash		1,169,528	430,722
Receivables		460,490	166,646
Listed investments		32,120,872	26,456,226
Unlisted investments		950,450	770,216
Bank and term deposits		<u>3,659,149</u>	<u>1,176,679</u>
		<b><u>38,360,489</u></b>	<b><u>29,000,489</u></b>
<b>Financial Liabilities</b>			
Accounts Payable		<u>1,225,403</u>	<u>941,968</u>

## THE ROYAL SOCIETY FOR THE PREVENTION OF CRUELTY TO ANIMALS NEW SOUTH WALES

### Declaration in accordance with the Charitable Fundraising Act 1991

I, Andrew Wozniak, President of the Royal Society for the Prevention of Cruelty to Animals, New South Wales, state that in my opinion:

- a) the accompanying Income and Expenditure Statement gives a true and fair view of all income and expenditure of the Society with respect to fundraising appeals; and
- b) the accompanying Balance Sheet gives a true and fair view of the state of affairs with respect to fundraising appeals; and
- c) provisions of the Charitable Fundraising Act 1991, the regulations under the Act and the conditions attached to the Society's fundraising authority have been complied with; and
- d) internal controls exercised by the Society are appropriate and effective in accounting for all income received and applied from any fundraising appeals.

Signed this 20th day of September 2004



Mr Andrew Wozniak,  
President

### Directors' Declaration

The directors of the Royal Society for the Prevention of Cruelty to Animals, New South Wales declare that:

1. The financial statements and notes, as set out in the accounts, are in accordance with the Corporations Act 2001:
  - a) comply with Accounting Standards and the Corporations Regulations 2001; and
  - b) give a true and fair view of the financial position as at 30 June 2004 and of the performance for the year ended on that date of the Society and economic entity.
2. In the directors' opinion there are reasonable grounds to believe that the Society will be able to pay its debts as and when they become due and payable.

The Society and the Branches have entered into a deed of cross guarantee under which the Society and the Branches guarantee the debts of each other.

At the date of this declaration, there are reasonable grounds to believe that the Society and the Branches which are party to this deed of cross guarantee will be able to meet any obligations or liabilities to which they are, or may become subject to, by virtue of the deed.

This declaration is made in accordance with a resolution of the Board of Directors.

Signed this 20th day of September 2004



Mr Andrew Christopher Wozniak,  
President



Dr Peter Wright,  
Treasurer

# THE ROYAL SOCIETY FOR THE PREVENTION OF CRUELTY TO ANIMALS NEW SOUTH WALES

## Independent Audit Report

To the members of the Royal Society for the Prevention of Cruelty to Animals, New South Wales.

### Scope

I have audited the financial statements of the Royal Society for the Prevention of Cruelty to Animals, New South Wales for the year ended 30 June 2004 as set out on pages 19 to 36. The Directors are responsible for the preparation and presentation of the financial statements and the information contained therein. I have conducted an independent audit of the financial statements in order to express an opinion on it to the members of the Royal Society for the Prevention of Cruelty to Animals, New South Wales.

My audit has been conducted in accordance with Australian Auditing Standards to provide reasonable assurance as to whether the financial statements are free of material misstatement. My procedures included examination, on a test basis, of evidence supporting the amounts and other disclosures in the financial statements, and the evaluation of accounting policies and significant accounting estimates. These procedures have been undertaken to form an opinion as to whether, in all material respects, the financial statements are presented fairly in accordance with Australian Accounting Standards and other mandatory professional reporting requirements and statutory requirements so as to present a view of the Society and its branches which is consistent with our understanding of its financial position and results of its operations and its cash flows.

The names of branches of which I have not acted as auditor are set out in Note 23. I have received sufficient information and explanations concerning these branches to enable us to form an opinion of the financial statements of the Society and its branches. The audit opinion expressed in this report has been formed on the above basis.

### Audit Opinion

In my opinion, the financial report of the Royal Society for the Prevention of Cruelty to Animals, New South Wales is in accordance with:

(a) the Corporations Act 2001, including:

(1) giving a true and fair view of the Society's and consolidated entity's financial position as at 30 June 2004 and of their performance for the year ended on that date; and

(2) complying with Accounting Standards and the Corporations Regulations 2001; and

(b) other mandatory professional reporting requirements.

Additionally, with regard to the Charitable Fundraising Act 1991, in my opinion:

(a) the financial statements show a true and fair view of the financial results of fundraising appeals; and

(b) the financial statements and associated records have been properly kept during that year in accordance with the Act and the regulations; and

(c) money received as a result of fundraising appeals has been properly accounted for and applied in accordance with the Act and the regulations; and

(d) on the basis of the accompanying financial statements there are reasonable grounds to believe that the Society was able to pay its debts as at 30 June 2004.

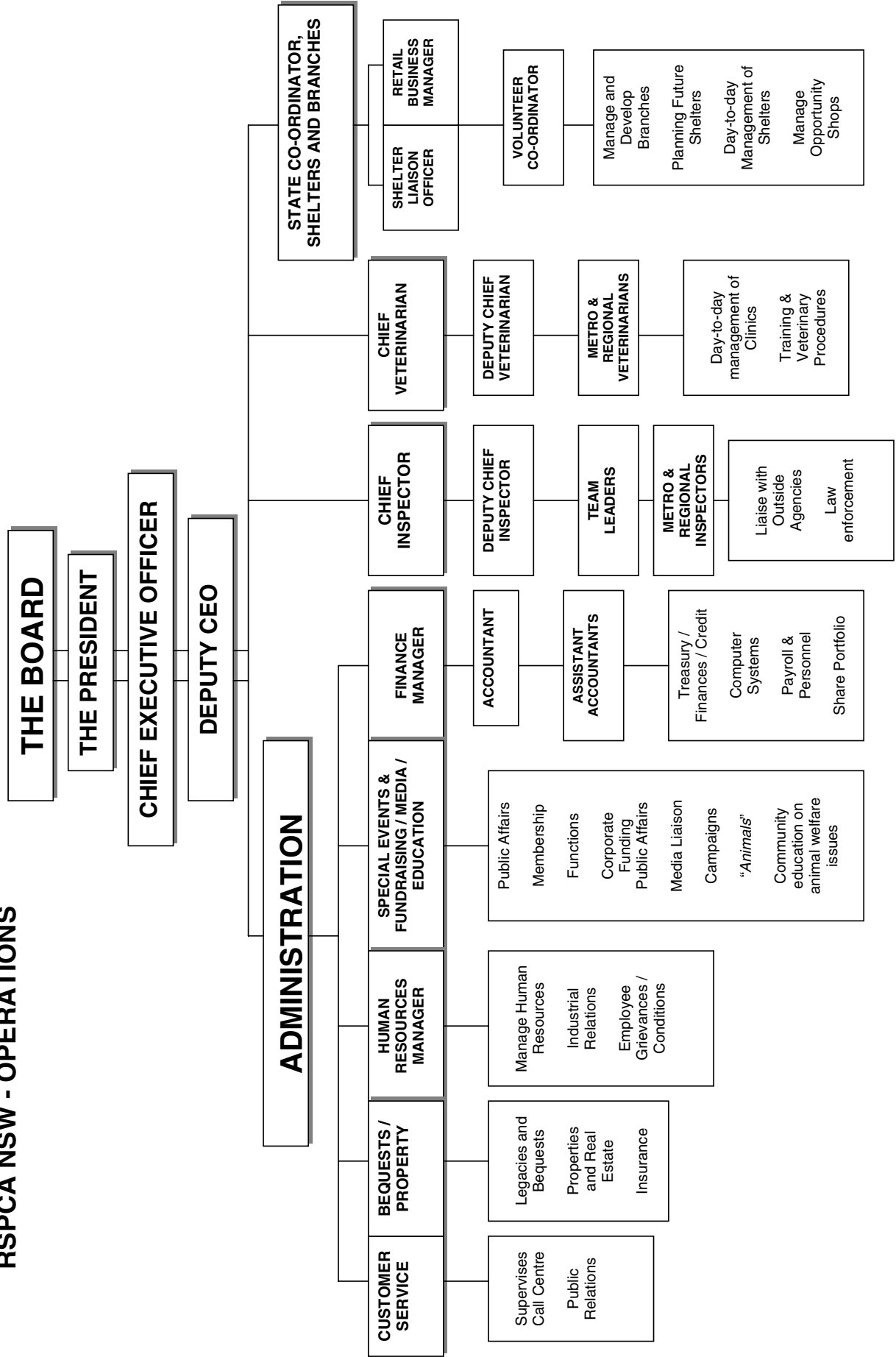


---

Albert Mok  
Chartered Accountant  
Registered Company Auditor  
Sydney  
Dated: 20th September 2004



## RSPCA NSW - OPERATIONS



1 JULY 2003 - 30 JUNE 2004

**Thank you to all supporters who have joined our Legacy Program. All RSPCA legacy pets are given the utmost love, care and attention.**

ALLINGHAM, Barbara H  
 AMOS, William B  
 BACON , Deirdre  
 BAILES, Mildred Rita  
 BAILEY, Elizabeth ZP  
 BATTY, Doris Mabel  
 BAWDEN, Alwyn F  
 BEDNALL, Edna Nunn  
 BENNETT, Stanley A  
 BERESFORD, Ruth A  
 BLACH, Lois Anne  
 BOLTON, Jean Elizabeth  
 BOND, Judith  
 BOUNDS, Nora  
 BRAIN, Marion Ilma  
 BROWN, Renie M  
 BURKE, Fay Esme  
 BUSBY, Lorna Jean  
 CAGNEY, Muriel Edna  
 CAMERON, Kenneth James  
 CAMPBELL, Judith M  
 CHARLES, Anthony E  
 CLARK, John  
 CLARKE, Joan  
 COHEN, Daphne J  
 COLEMAN, Patricia  
 CORCORAN, Marjorie I  
 COWNIE, Phyllis  
 CRICKETTE, Catherine AM  
 CULPEPPER, Mary  
 DAVIES, Daphne LD  
 DAWSON, Warren Hugh  
 DENNING, Joan Ida  
 DIGRE, Gloria  
 DREIKURS, Eric  
 EARLS, Eleanor M  
 EDWARDS, Oscar William E  
 FRANKS, Gwenda Mavis  
 FRICKE, Frederick Thomas  
 GASTOR, Barbara R  
 GAVRILOVIC, Danica Olga  
 GERARDY, Mireiller RAB  
 GOLDBERG, Carol  
 HARRIS, Elizabeth Grace

HARRIS, Joyce FE  
 HARRIS, Mavis  
 HATTON, Anna Beryl  
 HEFFER, Iris  
 HEGARTY, Elizabeth  
 HENDERSON, Elsie  
 HILLIER, Elizabeth  
 HUGHES, Ida Mary  
 INGSTER, Joseph  
 JEFFRIES, Elaine Josephine  
 JONES, Gertrude K  
 JURRJENS, Harmina G  
 KEELING, Norma Dorothy  
 KLUEVER, Tina H  
 KOHLER, Anna Claudia  
 LAMBER, Thelma E  
 LESLIE, Kathleen  
 LOVIE, Kathleen F  
 MACE, Frederick John  
 MACE, John M  
 MATIC, Ursula Ida  
 MATTHEWS, John  
 MAY, Frank WP  
 McCARTHY, Tara  
 McCORMACK, Ray Mary  
 McMAHON, Jennifer L  
 McMILLAN, Victor James  
 McNEIL, Joyce Irene  
 MEATS, Gloria  
 MOORE, William  
 MORRISON, Monica G  
 MURPHY, Nancy Beatrice  
 NEWMAN, Annette Gillian  
 NICHOLSON, Wendy M  
 NORCLIFFE, Grace C  
 O'KEEFE, John K  
 OLIVER, Sadie  
 PACEY, Elizabeth May A  
 PASS, Ellen Elizabeth  
 PHILIPS, Juanita Teresa  
 PIPER, Kathleen Kyarra  
 POOLEY, Emily Joyce  
 POSTON, Hilma Waterford  
 PRINGLE, Marjorie G

QUENTIN, Verna J  
 READ, Marjorie Elizabeth  
 REED, Gladys Rae  
 RICHARDS, Connell R  
 RIDGWAY, George F  
 RYRIE, Esther HV  
 SITSI, Erna  
 SLADE, Philip Stanley  
 SLOMAN, Jeanette M  
 SMITH, Eleanor  
 SMITH, Mary Isobel  
 STEWART, Hilda ME  
 STUCKEY, Sybil O  
 TAYLOR, Ray  
 TERRELL, Oliver I  
 TIPPER, Laurence  
 TRIGG, William David  
 TUCKER, Douglas J  
 TURNER, Shirley  
 VENABLES, Barbara L  
 WALKER, Donald Francis  
 WALLS, Jean Lillian  
 WARES, Rosemary Lillian  
 WATSON, Isabella Jean  
 WATSON, Walter C  
 WEBB, Helen Jean  
 WHITE, Catherine Clare  
 WILKIE, Cyril  
 WILLIAM, Thelma HI  
 WILSON, EE  
 WILSON, Judy

In memory of my late husband,  
 James Dick  
 The Van and Norman Peters  
 Bequests  
 Clive Arnott Trust  
 Elliott Trust



Brenda South from Orange branch



Margaret Gaal from Bathurst branch



Heidi Quine from Blue Mountains shelter



Wendy Taylor from Yagoona shelter



Tricia Christesen from Central Coast branch



Len and Lorraine Johnson from Broken Hill branch

The training department helps staff and volunteers perform their roles safely and efficiently.

Training helps them to better understand animal behaviour and provides skills in animal management which helps them to do their jobs more effectively. Through training, staff become more accountable and ongoing assessment helps ensure this.

The training department also supports staff who are undertaking external job-related training. Presently, 50 RSPCA staff are taking external courses which will help them develop in the workplace. The RSPCA receives funding for these trainees from the State and Federal Governments.

Courses are implemented across the State and are tailored to meet the needs of each local area. These needs may include injury reduction, animal disease identification and control, product sales and conflict resolution.

Other courses include animal first aid, flea, tick and heart-worm prevention and control, animal nutrition, workplace communication, dog behaviour, puppy and kitten care, clinical pathology, communication, microchipping, grooming, positive dog training and euthanasia.

All training is aligned with accredited TAFE NSW training courses meaning students receive certified, accredited training which is recognised Statewide. And, the training department has provided assessments and course guidelines for TAFE students. This means that delivery and assessment of animal-related courses across the State will now have an orientation towards animal welfare.

New staff and volunteers are inducted by the training department, providing both with training in basic occupational health and safety, animal handling, communication skills and RSPCA policies and procedures. This allows them to start work with an understanding of organisational and OH&S requirements.

Each week, training is offered to new staff and volunteers at our major shelter in Yagoona. These sessions cover risk and hazard identification, safe handling of animals, identifying signs of stress and anxiety in animals, dog and cat body language and the risks of working with animals.

The courses are offered to all staff including inspectors, animal attendants, customer service staff, veterinary nurses, vet students and volunteers.

As a result, there has been a decrease in time lost from work injuries (LTIs). This has resulted in a decreased need for the use of casual staff and a reduction in the loss of volunteers by 50 percent.

This program has recently been introduced to the Newcastle shelter in order to reduce their frequency of serious bite and scratch injuries.

In February 2004, before the introduction of this training, there were six animal related injuries at Newcastle shelter.

In the four months since training commenced, there has been no occurrence of animal related injuries.



From left: Narelle Maxwell, Kevin Cooper and Amanda Purkiss

The training department also conducts guided tours of the Yagoona clinic, inspectorate and shelter for students studying animal care. This tour complements their theoretical knowledge of animal welfare and gives them first hand knowledge of how the RSPCA works. As a result, many of these students become RSPCA volunteers.

RSPCA branches which sell animal products in their shops must be trained in the use of these products. This allows them to offer accurate and consistent information to customers and, increases the profile of the branch as experienced in their field.

Volunteer foster carers are also trained to overcome animal behaviour problems. This allows them to re-home more animals and to match each animal with a suitable owner.

Training aids such as first aid dummies allow training in intravenous techniques and CPR. These training aids have a workable respiratory system - the dog first aid dummy has a femoral pulse, working larynx and jugular and cephalic veins. The cat also has a heart beat.

Staff are able to be trained in stethoscope use, the handling of injured animals, restraint for injections and other invasive procedures. By using these aids, staff learn to take blood for heartworm tests, to vaccinate sales animals and euthanase animals safely and humanely.

The use of these training aids greatly minimises the stress our animals feel when being handled by staff.

Thank you to the RSPCA NSW Auxiliary for providing these training aids.

We have met many dedicated people both inside and outside the RSPCA, who spend an enormous amount of time and resources trying to improve the welfare of the animals around them. Our role is to support these dedicated people through improving their skills and knowledge.

- Narelle Maxwell  
Training co-ordinator



Emma Pearce volunteers to walk dogs and provide companionship to cats one day a week at Yagoona shelter.

She completed five one-day training courses as a volunteer – Occupational Health and Safety (OH&S), Introduction to Cats, Introduction to Dogs, Zoonoses (diseases transmissible from animals to humans) and Animal First Aid.

Emma found her training courses “excellent”.

“The trainers really know their subjects and offer extremely relevant courses,” she said.

“They don’t treat volunteers any differently to staff and I learned aspects of animal behaviour that I found really interesting and useful.

“The calming exercises for agitated dogs were great! I had never had any of that information before and as a volunteer you work with dogs who haven’t been treated very well. It really changed the way I see animals.

“I think it is necessary to explain, through training, why animals react the way they do – it makes your job easier if you understand why.

“Even the OH&S training was valuable, it is essential because working in the shelter is very physical work, especially with the bigger dogs.

“The course on zoonoses has influenced the way I approach dogs. I’m much more aware of appropriate contact with them.

“The trainers are really passionate about passing on their knowledge and this makes for much more interesting courses.

“I’m really glad I had the opportunity to learn these skills, not just because I love animals but because I’ve learned really interesting things,” Emma said.

The RSPCA's veterinary clinics provide veterinary services to shelter animals and to the pets of private clients. The clinics help fulfil the five freedoms for animals – especially freedom from discomfort and freedom from pain, injury and disease.

**This year we aimed to:**

- **strategically develop with other agencies programs to address the link between violence to animals and people**
- **expand the Pets of Older People program**
- **develop a range of desexing programs and assess which ones provide the best outcomes for animal welfare**
- **develop strategies to deal with animal hoarders**
- **liaise with our regional shelters and branches and provide veterinary input and guidance where needed.**

During the last 12 months the quality of veterinary care offered by our clinics has continued to grow. We are achieving higher standards of patient care, offering a wider range of services and becoming increasingly involved in community animal welfare projects.

These projects, such as desexing programs help us stop problems before they start.

Our staff are now more qualified, more dedicated and have more impact in communicating the importance of animal welfare to the clients of our veterinary clinics and to the broader community.

Specifically, three staff have gained membership of the Australian College of Veterinary Scientists – Newcastle senior veterinarian, Dr Raj Packianathan (MACVSc – Medicine), Dr Pat Shuen (MACVSc – Surgery) and chief veterinarian Dr Mark Lawrie (MACVSc – Animal Welfare).



Drs Packianathan and Shuen's memberships will bring further expertise to their areas of interest and will assure clients that highly qualified staff are taking care of their interests and the health of their animals. Dr Lawrie's membership in animal welfare has given him a greater understanding of the history and philosophies of the animal welfare movement and its practical application. A six months' period working for the International Fund for Animal Welfare also gave Dr Lawrie new insight into the challenges for animal welfare on a global level. He travelled to South Korea and to islands in the South Pacific region.

We are now involved in an ever-increasing range of projects - desexing programs, community animal welfare schemes, dog projects in indigenous communities and educational programs.

Specifically, this year, the clinic helped develop a range of desexing programs. Through the RSPCA NSW Auxiliary, over 160 cats and dogs have been desexed at a subsidised rate. This has meant that people who could not otherwise afford to have their pets desexed now have the opportunity. It has resulted in the prevention of tens of thousands of potentially unwanted animals and has put people in contact with the RSPCA and its priorities of responsible pet ownership and prevention of cruelty.

A community animal welfare scheme in Bourke was an initiative of the RSPCA and the Australian Veterinary Association (AVA). It provides subsidised desexing for the pets of people on low incomes. Under the scheme 122 animals were desexed and educational programs on animal welfare were delivered to school children there.

Internationally, RSPCA staff were involved in desexing programs in the South Pacific region with a desexing clinic on Bora Bora in French Polynesia. Bora Bora is one of many South Pacific



Ingrid Varnerin (left) and Emily Monnington



UK exchange vet Helen Wikeley

islands with serious dog and cat overpopulation problems and few resources to solve them. This project, organised by the Esther Honey Foundation, has the potential to have a real impact in an island community.

Six hundred animals (including 506 dogs) were desexed in four weeks. The program will be repeated in a few months' time and will turn an ever increasing population of unwanted animals into a finite one.

The RSPCA is determined that these initial programs will be followed by even greater efforts here in NSW. Every animal desexed means fewer unwanted puppies and kittens, less euthanasia at our shelters and reduced animal suffering.

A community animal welfare scheme of a different kind has evolved in the form of POOPS – the Pets of Older People scheme. This program finds homes for the pets of people who can no longer look after them, who are seriously ill or who may need to be hospitalised permanently. It was devised by St Joseph's Hospital in Auburn and relies on the RSPCA for veterinary care for these pets. The RSPCA also provides emergency accommodation for pets until they are re-homed or fostered.

This has had a direct impact on the well-being of patients at St Joseph's and on the welfare of the animals in the scheme.

We are grateful to the Federal Government for their support of indigenous dog programs through the group Animal Management in Rural and Remote Indigenous Communities (AMRRIC) and the announcement, by Senator Amanda Vanstone, of \$300,000 in funding for AMRRIC. The RSPCA was involved in lobbying for this funding and will work with AMRRIC to appoint an executive officer to co-ordinate its activities delivering animal welfare and population control to remote communities. The AVA will also investigate the delivery of its PetPEP (Pets and People Education) program to Aboriginal children.

#### **Tails we won!**

The RSPCA and the AVA won a significant victory when the NSW Parliament voted to ban cosmetic tail docking. We campaigned strongly for an end to this cruel and unnecessary practice and as a result, there is now a national ban on cutting off a dog's tail for reasons of fashion.

#### **Investing in the future**

The clinic has been closely involved with the University of Sydney's undergraduate veterinary science course. We now routinely have up to four final year students working in the clinic each month. These students gain experience in a wide range of medical and surgical cases as well as animal welfare issues. Both our nurses and vets are grateful for the extra help the students provide in the clinic and to have an input into the education of future veterinarians. The experience these students have at the RSPCA will encourage them to focus on animal welfare in their later careers.

The clinic also played its part in raising the profile of the RSPCA in the media. Our vets have had the opportunity to explain puppy and kitten care to audiences we would not otherwise reach and to reinforce the message of responsible pet ownership in many media outlets. We will continue to use the media to reach the community in a positive way to help change negative attitudes and promote animal welfare.

A vet exchange program has been organised with the RSPCA in the UK. Our first exchange for a six months' period took place this year. This is an opportunity for staff from both RSPCA NSW and RSPCA UK to learn the best practices of both organisations and to learn new skills to apply in their jobs back home. In May, Dr Michelle Lawler from Yagoona exchanged places with Dr Helen Wikeley from Harmsford.

#### **Challenges ahead**

Animal hoarders remain a significant problem for the RSPCA and for other agencies. The animal hoarder causes suffering for animals and for people. We are concerned that the



Dr Ann-Margret Withers (right) and colleagues

“no-kill” movement adopted by some animal welfare and animal rights organisations is inadvertently contributing to this problem and leading to increasing numbers of unwanted animals.

The RSPCA has looked closely at its own policies and protocols in regard to fostering animals. Many of our staff in the shelter, clinic and inspectorate go beyond the call of duty in confronting this shocking problem and treating the animals who are the victims of it. One case can cost the RSPCA hundreds of thousands of dollars in veterinary fees before adding the cost of court action and the accommodation of sometimes dozens of animals. We continue to look at creative solutions to deal with this enormous problem. Specifically we are involved in educating the public and the veterinary community about the problem of animal hoarding.

#### **Staying active**

The RSPCA is opposed to the use of animals in research and teaching but remains involved in this area to ensure better animal welfare for animals used in research. The RSPCA is represented on a number of animal ethics committees. Dr Mark Lawrie and RSPCA Chief Inspector Don Robinson are on the Animal Research Review Panel.

#### **Thanks!**

To Dr Mark Westman and to Dr Simone Maher for their willingness to participate in media opportunities. To Dr Magdoline Awad for acting as chief veterinarian during Dr Mark Lawrie’s absence overseas and to Dr Ann-Margret Withers and Bathurst branch president Margaret Gaal for their excellent work in Bora Bora. Thank you to Dr Mary Jane Stusel from Kidman Way Veterinary Clinic at Bourke for her participation in the Bourke desexing program. Our thanks as usual go to the RSPCA NSW Auxiliary for the support they give the clinic. We can always rely on their dedication in providing equipment to aid in the care and comfort of sick and injured animals. This year the Auxiliary has provided surgery tables and fluid pumps. Thank you.

- **Dr Mark Lawrie**  
**Chief veterinarian**

#### **Broken Hill**

RSPCA Broken Hill’s clinic and shelter have continued to provide excellent service for the community in far west NSW. Not only has there been an increase in the re-homing rate of animals directly through the shelter but also via the new website developed by shelter manager, Merridy Wall and veterinarian Brigid Hales. The dedicated staff headed by managing veterinarian Honey Nelson has provided service not only to the local area, but also to community centres which do not have access to a veterinary clinic. Regular trips to Tibooburra and Wilcannia have provided much needed animal care and education about animal welfare.

Indigenous dog programs in the far west have proved to be extremely successful. Organised by RSPCA NSW and the Far West Area Health Service, these programs have provided desexing and health care to hundreds of animals in communities such as Engonia, Goodooga and Wilcannia. With continued support, the RSPCA hopes to provide veterinary services to indigenous communities on a regular basis. Sydney University veterinary students with an interest in animal welfare have donated their time to these projects and we hope this will lead to greater involvement of vets in community projects.

#### **Newcastle**

Newcastle RSPCA is on the verge of a new beginning with a new shelter due for completion next year at Rutherford. Rutherford is a great achievement for RSPCA NSW providing a new facility for Newcastle’s strays and surrendered animals. The RSPCA will continue to service the Newcastle and Maitland areas for many years to come.

Newcastle RSPCA has welcomed several new veterinarians from all over the world. Milan Savkovic from Serbia, Saarah Lusher from New Zealand, Eva Fonnes from Melbourne and managing veterinarian Raj Packianathan from Sri Lanka (via RSPCA Broken Hill). RSPCA Newcastle can only benefit from such diverse and interesting backgrounds.

#### **The highlights of our year in the clinic were:**

- The establishment of Community Animal Welfare programs
- Our success in working on dog programs in indigenous communities and the success, through Dr Mark Lawrie, in obtaining Federal funding for AMRRIC
- The opportunity for RSPCA staff to present papers at the Australian Veterinary Association conference
- Our involvement in the success of the anti-tail docking campaign
- Our continuing positive interaction with the University of Sydney Faculty of Veterinary Science. This influences students in a positive direction towards animal welfare.

#### **Our goals for 2004-2005:**

- To strategically develop with other agencies, programs to address the link between violence between animals and people
- To expand the Pets of Older People program
- To develop strategies to deal with animal hoarders
- To adapt veterinary services in the Hunter region to the altered RSPCA presence there after the establishment of our new shelter
- To liaise with our regional shelters and branches and provide veterinary input and guidance as applicable.



*Pugsley*, a small terrier-cross was a well-behaved dog who showed no signs of aggression while he was at the RSPCA waiting for a new home.

Our staff were delighted when *Pugsley* found a home with a family with four teenage children.

But when he went home, *Pugsley* had new challenges to overcome and he became confused about his place in the family and how to respond to people, especially children.

*Pugsley* began to snap and snarl and growl. He also had a fear of a particular kind of shoes and would attack them each time his new owner wore them.

*Pugsley* was aggressive over his food and toys and his new owners began to wonder what they could do about his behaviour.

*Pugsley* is typical of the hundreds of animals who are surrendered to the RSPCA each year because of behaviour or temperament problems. Until now, many of these animals had to be euthanased. Now, with the help of veterinary behaviourists such as Dr Robert Stabler and Dr Judith Randall, and specially trained and qualified RSPCA staff, many of these animals can be given a second chance.

Dr Randall explained that aggression in dogs is almost always caused by anxiety.

"I was able to teach *Pugsley's* family how to read a dog's body language, what their dog found confronting, confusing and unsettling and what might make him fearful. Then I could teach them how to manage *Pugsley's* uncertainty and fears.

"Dogs need consistency. Punishment doesn't work, especially with aggression, it only makes a dog more anxious and can make the aggression worse. I gave *Pugsley's* family exercises to help him feel more stable and to give them gentle control over him in a non-confrontational manner," she said.

Dr Randall sees a lot of dogs with aggression problems – unfortunately not all of them can be helped.

"Aggression in dogs can only be controlled and managed, it cannot be cured. Any behavioural modification needs to start with basic exercises before moving to solutions for more complex problems," she said.

The success depends on the personality and history of the dog,



Making a difference...  
 Dr Judith Randall

the kind of problem and on the amount of time the owner has to work with the dog.

Dr Randall also treats other problems such as fearfulness, separation anxiety, barking and reactivity to noise.

Dr Judith Randall BVSc, MACVSc (animal behaviour) and Delta accredited dog training instructor, can be contacted on (02) 9770 7555 for consultations.

Behaviour problems are one of the most common reasons that people surrender or abandon their animals, especially dogs.

This year, hundreds of dogs, cats and other animals were brought to the RSPCA because their owners could not understand their pet's behaviour or how to improve it. Sadly, over 500 dogs, cats and approximately 100 other animals were euthanased because of these behaviour problems. However, many owners can now be helped to keep their animals through the RSPCA's increased range of behavioural

services. Dr Judith Randall (MACVSc) is a veterinarian who specialises in animal behaviour. She now offers behavioural consultations both over the telephone and in our Yagoona clinic.

RSPCA veterinary nurse and puppy pre-school co-ordinator, Carolina de Silva has also expanded her role to include junior dog training classes and phone counselling for behaviour problems. Our aim is to reduce the number of animals surrendered for treatable behaviour problems.

**Rachel Baynham - RSPCA veterinary nurse**

I began at the RSPCA veterinary clinic two years ago as a volunteer, while I had a part-time job in a private vet clinic.

I wanted to gain more experience while I was studying Certificate Three in veterinary nursing.

Then I took up a traineeship with the RSPCA clinic and now I'm completing Certificate Four.

It is always busy in here and we get some very interesting cases and there is a lot of scope to see many different animals. There is a huge workload, but it gives me the chance to work with animals no-one else cares for – the strays and the inspectors' cases – mistreated animals.

That was the main reason I wanted to work here – in private practice you work with animals who are loved but here I saw a chance to make a difference.

Have I made a difference? Yes, we have the opportunity here to make animals' lives better while they stay with us, regardless of whether they are able to be re-homed afterwards.

We do our best to improve their quality of life. My most memorable case was *Mr B*. He was a scared, emaciated dog who came in through the inspectors. He was so scared, he wouldn't leave his cage. He couldn't walk on a lead, so we were carrying him out for his walks. Gradually he recovered and came out of his shell. He began to put on weight and he went to a new home recently. He has come back to visit and the difference in him is enormous!

I have learned a lot here. I have developed good time management skills – simply because we are so busy. And there is a huge opportunity to learn about the management of different animals. I've also gained valuable experience in surgery and medical nursing.

In England I worked with horses – I have British Horse Authority qualifications in horse care and management, so working in the clinic has given me invaluable experience with small animals.

In February next year, I am going with a group of Tibetan Buddhists to Bihar, the poorest State in India. They have received funding to run a street dog program and I am going along to help with desexing. It's a dream come true!



Rachel Baynham... extra special care for mistreated animals

Jill Davidson, Director of Social Work at St George Hospital, Belinda Cooley from the hospital's domestic violence counselling service, RSPCA CEO Bernie Murphy and RSPCA Chief Veterinarian Mark Lawrie

Victims of domestic violence no longer need to fear for the safety of their pets with the launch of the RSPCA and St George's Hospital *Safe Beds for Pets* program. The two organisations are working together to provide sanctuary for both animals and people at risk of domestic violence.

A joint project between the Australian Veterinary Association and the RSPCA was held this year to promote animal welfare in the Bourke region.

Vanessa Barratt from the AVA's PetPEP program, RSPCA Inspector Katharina Theodore, Council Ranger Isabel Widdison and local vet Dr Mary Jane Stutsel visited pre-schools and primary schools in Bourke to talk to children about responsible pet ownership.

Discussion centred on regular vet checks, preventing animals straying and the importance of desexing.

Dr Stutsel and her staff, vet nurses Mel Myers and Miriam Mitchell helped RSPCA veterinarian Dr Ann-Margret Withers desex many of the Bourke community's animals – having a significant impact on the uncontrolled breeding that leads to unwanted animals.

The RSPCA relies on its supporters to help provide services to animals in need.

Many supporters leave a gift in their Will (a bequest), to the RSPCA.

Bequests help care for surrendered animals or sick and injured animals. They provide the funds to accommodate these animals, treat their wounds, heal their shattered hearts and help them find new homes.

Bequests also support the work of the RSPCA's inspectors who enforce the law and bring cruelty offenders before the courts. This costs the RSPCA many thousands of dollars.

Leaving a bequest also helps develop the educational role of the RSPCA. The RSPCA takes part in many aspects of community life, including school visits and talks to community groups. You can help us achieve our aim of teaching kindness, preventing cruelty and raising awareness of the RSPCA by leaving a bequest.

A bequest need not be large or extravagant to be vitally important. Your gift, however small can make a real difference to the lives of many animals in our care.

RSPCA supporters can also join our Legacy Pets Program, which looks after your pet if you are unable to do so any more. Your pet is lavished with the best possible care in our legacy facilities. The RSPCA is presently investing in special legacy homes for dogs and a separate facility for cats.


### **The Animal Friends Society**

When you confirm in writing that you are leaving a bequest to the RSPCA, or, if you join our Legacy Pets Program, you are invited to become a member of the Animal Friends Society.


Members are invited to regular meetings where they hear about new developments at the RSPCA and meet some of the animals who are helped by bequests. For more information, please phone (02) 9770 7547.

**- Zofia Harper**  
Bequests officer

**A gift in your Will to the RSPCA**



**The Animal Friends Society**



To receive an obligation free information booklet on leaving a bequest to RSPCA NSW please telephone the Bequest Office on (02) 9770 7547.



Ayesha was a much-loved member of RSPCA Blue Mountains shelter.

She came to the shelter as a legacy cat and quickly became a favourite.

Ayesha spent her days in luxury until she died in February this year.

She is sadly missed by all who knew her.



Legacy dog Sophie, lived a long and happy life at the RSPCA's Yagoona shelter



The special events and fundraising department promotes the role and services of the RSPCA to the public for the purpose of raising funds. This ensures the RSPCA can fulfill its charter to prevent cruelty to animals.

While the priority for this department is to raise funds, raising the profile of the RSPCA in the marketplace is just as important. If our supporters can't see the achievements of the

RSPCA or are not given the opportunity to communicate with their chosen organisation, there is every chance they may take their support elsewhere. This support, whether through donations or lobbying, is crucial for the RSPCA to create genuine, positive changes to animal welfare.

The RSPCA continues to communicate with our supporters through various channels, in particular, through the media, at major events, through telemarketing and by direct marketing campaigns.

The past 12 months saw an increase in our fundraising efforts. By increasing the number of financial appeals, we have achieved the goal of sharing RSPCA stories with supporters more frequently. This has allowed us to raise further funds. A series of acquisition programs have also been undertaken to encourage more financial supporters. As a result of these initiatives, we have recruited approximately 1100 new donors.

### Special events

We successfully managed to raise the number of participants and increase profits at both the RSPCA Million Paws Walk and

Black Tie Ball making over \$55,000 at each of these events. Our ultimate goal is to achieve a \$100,000 profit from each of these events during 2005. While this is a significant jump and rather unlikely, we will attempt to increase the number of guests at the RSPCA Black Tie Ball through strong publicity campaigns and by developing stronger relationships with the corporate sector. Corporate teams are also essential in raising the number of participants at the RSPCA Million Paws Walk. The average corporate team member participating in the Million Paws Walk raises over \$50 in sponsorships. Compared to the \$10 individual entry fee, corporate teams can significantly increase the amount of funds raised.

### Membership

As of 30 June 2004, the RSPCA had 6788 financial members. This is an increase of 383 members from the same date in 2003. Membership has been promoted at all events that the RSPCA is involved in including the Royal Easter Show, Black Tie Ball, Council days and the Million Paws Walk.

Ultimately we would like all donors and users of RSPCA services such as our shelters and veterinary hospitals to become members and thereby have a deeper involvement and understanding of the objectives of the Society.

### Workplace giving programs

As a result of workplace giving initiatives by Australian Charities Fund and the Charities Administration Fund, the RSPCA has been included as a charity partner for a number of large corporations including Allianz, Orica, Citibank, HSBC, Coca Cola Amatil, Integral Energy, Macquarie Bank and IAG, amongst others.

Traditionally, the RSPCA has not been a priority beneficiary of corporate philanthropy but has relied on the support of individual donors. While the bulk of our funding will continue to be from individual donors, particularly bequestors, corporate workplace giving programs open up new opportunities such as further voluntary support, potential sponsorships and greater promotional opportunities. Furthermore, workplace giving ensures that each donation from the employee is given before



From left: RSPCA Directors Graham Hall and Dulcie Goldstein, Her Excellency Marie Bashir AC, Governor of New South Wales, RSPCA NSW CEO Bernie Murphy and Helen Dalley

tax and therefore each dollar is worth more to both the donor and the charity. Many corporations also match the gifts of their staff.

Through workplace giving programs and regular monthly donation schemes, there are further benefits to the RSPCA, in particular, reduced administration costs.

**Involvement at external events**

Along with the annual events we host each year, for example the Million Paws Walk, Black Tie Ball and RSPCA Awareness Week, we are regularly invited to attend large community events. The past year saw us once again host a display at the Pet and Animal Expo and Sydney's Royal Easter Show. For the first time, the RSPCA also exhibited at the Retirement and Lifestyle Expo, where we promoted our bequest and legacy program, along with our Save a Senior program. This has given the RSPCA the opportunity to advise senior members of the community of their options for having a pet even if their lifestyle changes in the future.

In February, the RSPCA attended the Mardi Gras Fair Day for the first time, giving us an opportunity to speak to almost 50,000 members of the community.

During the 2004/2005 financial year, the RSPCA will continue to be involved at major community events, while also hosting its regular events.

I would personally like to thank each and every supporter who has assisted or participated in our event and fundraising activities over the past 12 months. Special thanks must go to our tireless volunteers, members, donors and corporate champions who continue to support us each year.

- Fiona Jessiman  
Special events and fundraising officer



RSPCA at the Royal Easter Show



Pet aerobics from the Bunyip Family at RSPCA Million Paws Walk 2004



RSPCA Million Paws Walk at Centennial Park



RSPCA Million Paws Walk at Dubbo

From a 'Legally Blonde' movie event to promote the RSPCA, to re-homing goats and publicising a range of cruelty prosecutions, RSPCA NSW continued to be in the public eye during the past year.

Significant cruelty prosecutions attracting strong media interest included the case of a Berrima horse trainer who was convicted on cruelty charges in Yass Local Court and ordered to pay a total of \$24,851 in fines and penalties. The deaths of 15,000 chickens near Griffith at the end of 2003 received national attention, while the case involving 33 Maltese dogs seized by the RSPCA from a house at Avalon was covered by all major television news, radio and newspapers. This issue highlighted the hidden problem of animal hoarding - a disturbing issue that is set to attract more publicity in the coming year.

A campaign by the RSPCA and the Australian Veterinary Association (AVA), urging the NSW Parliament to support the agreed national ban on cosmetic tail docking of dogs, received extensive media coverage, which included an *A Current Affair* interview with RSPCA chief veterinarian, Mark Lawrie.

Nationally, the live export issue was brought to the public's attention following the *Cormo Express* tragedy, when 5700 sheep died during live export.

Annual events affecting animals were publicised and gained a positive response, particularly from regional and suburban newspapers and radio. Publicity included warnings about fireworks and storms, de-sexing of cats before kitten breeding season and the dangers of leaving animals in hot cars.

The problems associated with giving pets as Christmas gifts or rabbits at Easter also highlighted responsible pet ownership, with a "responsible rabbit ownership" article printed in a number of regional newspapers. These issues also attracted coverage interstate, with RSPCA NSW working collaboratively with other States and Territories to promote the RSPCA's messages.

We also successfully promoted RSPCA events. These included the inaugural *Last Chance Club* reunion in September, the RSPCA Black Tie Ball in March and the Million Paws Walk in May. Channel 7's *Sunrise* program interviewed RSPCA staff during their live weather segments in the week before the walk. The Black Tie Ball, which included an auction of designer dog coats and celebrity-signed dog collars, was broadcast on ABC Radio National's *Bush Telegraph*.

Radio 2UE, supported by RSPCA sponsors, Hills Science Diet, introduced a Pet of the Day segment on John Stanley's program in May. Following a successful week of re-homing animals, 2UE and Hills then offered to continue with Pet of the Week. This segment has been hugely successful in finding homes for adoption animals.

The *Sydney Star Observer*, a gay street publication, now features a monthly RSPCA page, with the first RSPCA pet of the month adopted by a reader who saw the dog's story featured in the magazine.

RSPCA NSW is also providing some media support to Tasmania and the Northern Territory and we hope to continue

this arrangement while the need is there, to help promote the RSPCA in these regions.

Channel 9's Kerri-Anne Kennerly again took an active interest in the welfare of animals and continues to regularly invite RSPCA adoption animals onto the morning program. An Orphan Animals Week was planned for Kerri-Anne's program for July, involving live crosses to RSPCA shelters in Australia. There are many animals now in good homes thanks to Kerri-Anne's compassion for the plight of homeless animals and the RSPCA is indebted to her for her support.

Channel Ten's national *Bright Ideas* also program covered the RSPCA, introducing their segments from the Yagoona shelter. Channel 7's *Girl TV* also covered RSPCA issues in several segments filmed at the shelter with RSPCA veterinarian Mark Westman. Angela Catters' breakfast program on ABC Radio crossed live to the shelter to "talk to the animals" and Triple Z's Rosie visited us to do a story for her radio program.

Plans are also underway for at least two other national programs to cover RSPCA NSW issues.

The *Sunday Telegraph* again promoted a range of animal stories focusing on the work of RSPCA NSW. This newspaper also flew a photographer to Wilcannia to take photographs of a 27 year old dog believed to be Australia's oldest, following his examination by Broken Hill vet Dr Honey Nelson.

Staff undertaking media interviews were encouraged to attend a media training day this year, with plans to include more staff and media training support for branches in the coming year.

In June, the RSPCA was the subject of an ABC TV *Four Corners* program, focusing on the Society in New South Wales, South Australia and Western Australia. The program, which included comments by Animal Liberation, asked if the Society was "turning a blind eye" to animal cruelty in favour of commercial interests. The RSPCA considered the program was biased and showed very little of the true extent of our work. A media release was issued to all NSW media immediately after the program and an article by Chief Inspector Don Robinson was subsequently sent to NSW media, members and supporters and interested parties and was also placed on the RSPCA NSW website. The article reflected the hurt felt by staff and volunteers at the attacks on the RSPCA.

I took up my position as Media Officer in January after working in a similar position with RSPCA Queensland and I am privileged to have had the opportunity of visiting staff, branches and journalists in regional centres. These visits give added insight into the work of the RSPCA in each area and have attracted positive media attention. Centres covered in these visits included Broken Hill, Dubbo, Orange, Rutherford and Port Macquarie. Media support was also provided for the RSPCA-AVA desexing program at Bourke (also involving the AVA PetPEP education program in schools). More regional visits are planned for the coming year.

- **Claire Munro**  
Media officer

Media interest was strong in this year's RSPCA Million Paws Walk





The RSPCA is committed to providing a safe work environment for its employees, volunteers and the general public. An *Occupational Health & Safety Business Plan* (OHSBP) has been introduced to effectively manage risk and to enable the RSPCA to deliver this commitment.

The aim of the OHSBP is to identify hazards and encourage participation from all work groups in a consultative process ensuring a work environment where risk is controlled.

It aims to reduce workplace injuries and illness and to ensure that all RSPCA facilities are compliant with the *Occupational Health & Safety Act 2000*.

An OHSBP audit assesses the OHS standard in each RSPCA workplace across the State. The results are evaluated and then form the basis for a management project aimed at addressing OHS shortfalls at each location.

A consultative process is employed to decide the most practical and effective approach to either eliminate the hazard or control the risk.

The audit has been completed at Port Macquarie Centre, Port Macquarie RSPCA Opportunity Shop, Hastings Council Pound, Yagoona shelter and the RSPCA inspectorate. The next location to be audited will be the RSPCA clinic at Yagoona.

The completed audits have identified a reactive approach towards OHS. This escalates the risk of liability because corrective, rather than preventative action is taken. The OHSBP takes a pro-active approach when a potential health risk is identified. The result is fewer injuries, less lost time and lower insurance premiums.

The Occupational Health & Safety Act 2000 clearly places the ultimate responsibility for OHS with the Society and its directors. This responsibility includes not only employees but extends to volunteers and the public at every RSPCA facility in NSW. Therefore it is in the best interests of the RSPCA to ensure that it maintains a systematic approach towards effective OHS management.

The OHSBP incorporates a reporting system which is used at every RSPCA NSW workplace. The reporting system is designed so that it can be monitored allowing the Society to oversee its OHS responsibility more effectively. This integrated system also ensures that the RSPCA is maintaining a safer work environment that is compliant with safety laws.

In addition to the OHSBP, there has been a concentrated improvement in the way the RSPCA inducts new staff and volunteers. More emphasis is placed on occupational health and safety including the responsibilities of individuals toward the safety of colleagues and the public.

- **Lindsay Wilkinson**  
Occupational health and safety officer



Lifting and carrying heavy objects is part of the daily work of RSPCA staff like Ron Collett



Inspector Lisa McLean with appropriate safety equipment



## STAFF TURNOVER/ENVIRONMENT

Staff turnover	Hired 2003-04	Left 2003-04	Hired 2002-03	Left 2002-03	Hired 2001-02	Left 2001-02
Administration	4	3		1		2
Volunteers	-	1		-		-
Legacy	1	1		-		-
Media Officer	1	1		-		-
External Education	1	1		-		-
Marketing	-	-		2		1
Shelter-Yagoona	45	31		20		21
Tradewinds	-	-		1		-
Coffs Harbour	-	-		-		1
Central Coast	2	1		7		1
Gosford	5	2		-		-
Broken Hill	2	2		3		1
Blue Mountains	7	4		2		1
Orange	2	5		2		4
Wollongong	3	1		-		-
Tweed Heads	-	-		-		1
Yagoona - Clinic	22	16		13		19
Inspectors	4	6		-		7
Newcastle - Shelter	7	5		4		1
Newcastle - Clinic	9	18		9		5
<b>Total turnover</b>	<b>115</b>	<b>98</b>	<b>82</b>	<b>64</b>	<b>110</b>	<b>65</b>
<b>Average No of Employees</b>		<b>330</b>		<b>300</b>		<b>290</b>
<b>Employee's Turnover Ratio</b>		<b>29.70%</b>		<b>21.33%</b>		<b>22.41%</b>

Explanatory Note: A breakdown of staff hired in each department is not available for the years 2001-02 and 2002-2003

### Environment

The RSPCA is conscious of the environment and the impact we and the animals we care for, have on it.

The Society encourages and promotes recycling as much as possible in our shelters.

All shelters use donated newspaper, clothing and blankets to line cages and to provide soft bedding for animals.

The shelters also recycle cardboard packaging. Approximately 380 tonnes of paper product was recycled through Yagoona shelter alone in the past 12 months.

Manure from our livestock facilities is offered for fertiliser and the straw is also recycled as mulch.

Much to the delight of the EPA and staff, the Yagoona shelter has closed down the crematorium on the premises and is now outsourcing the cremation of euthanased animals to a new and environmentally conscious company. Our old crematorium was outdated and in need of major repair. With the closure of this dinosaur, air quality and manual handling issues have been dramatically improved. The shelter still offers a private cremation service which is also now carried out off-site.

In these times of drought, the shelters are all conscious of water usage. Several of our shelters have reticulated watering systems and with the rebuilding of some of our facilities this will be extended further.

The RSPCA is committed to improving our waste management and recycling as much as possible throughout all shelters. Rebuilding of our Newcastle area shelter has begun and this is the first step toward improved environmental outcomes at this shelter.



Bethany Amies (left), Simone Maher and Marnee Harlow from Burwood Council with shredded newspaper donated by council

## Overview

The information technology department advances the Society's goals and functions through an innovative, co-ordinated application of IT planning, services and security.

The IT department is committed to increasing the availability, reliability, security, cost effectiveness and integration of IT services for all departments, remote sites and users throughout NSW.

## Objectives and functions

Review the organisational structure for computer and communications technology, and recommend changes within budgetary guidelines to provide more effective and efficient services for all areas.

Develop an annual IT budget.

Develop goals and long range plans for technology, including timelines for implementation. This involves analysing and interpreting new directions in IT.

Ensure constant vigilance for IT security threats – especially increasing worldwide virus and spam problems.

Ensure business continuity planning (disaster recovery).

Ensure the upgrading of internet speed and reliability for shelters, branches, inspectors, shops and pounds.

Maintain and upgrade networks.

Negotiate comprehensive and cost effective contracts with communications providers.

Provide continual open communication with all staff for the sharing of efforts and concerns relating to IT services, including occupational health and safety, and environmental issues.

Design, develop and maintain web applications, including the main website – [www.rspcansw.org.au](http://www.rspcansw.org.au) – and sub-websites, in accordance with RSPCA principles and legal requirements. Increase the availability, timeliness, relevance and accuracy of information, in an attractive and logical form.

## IT staff

The department comprises three full-time staff – David Howell (IT manager and website administrator), Andy Nguyen (systems administrator) and Darren Fox (IT assistant). Part-time staff include Mark Kelman (IT co-ordinator – veterinary clinics) and Howard Glendinning (IT consultant). We are also assisted by experienced volunteer IT workers (currently Ken Robertson), as well as work experience students.

## Website

The RSPCA's website and sub-websites allow users to gain a detailed understanding of our strategies and activities, including animals offered online for adoption.

There has been a huge expansion of website content over the year. There has also been an ever-growing increase of visitors to the website. There was a growth in website visitors from about 6000 in July 2003 to almost 9000 in June 2004. Monthly page views increased by 60%, to over 58,000 pages

viewed, in the same period.

Sub-websites have been growing in importance. In this, we have been greatly assisted by the involvement of skilled voluntary workers, especially regarding the provision of online information about animals for adoption throughout the State (Animals Online), and detailed information about regional shelters, such as in Newcastle ([www.huntersrspca.org.au](http://www.huntersrspca.org.au)).

Karen Wickham, assisted by other volunteers, has been instrumental in extending the Animals Online section, and Jenny-Marie Copas has developed the Hunter Region (Newcastle) website, also with a local Adoptions (Animals Online) section.

The *Last Chance Club*, *Save Our Seniors* and the *Hills-2UE Animals of the Week* also continue to successfully re-home animals.

Therefore, one of the RSPCA's core functions – re-homing animals – is being successfully achieved through our website.

Over the next year, we aim to increasingly automate the website (content management) to allow for simplified editing of information.

## Internet

As well as improving internet connections throughout the State, the shelters and some other remote users will be connected to Yagoona within the next year via broadband (ADSL, where available) to form a virtual private network (VPN). This will allow secure (encrypted) access to all services available now to Yagoona network users. It will also improve security for other internet use. All shops will connect to Yagoona as they go online.

## New Programs

During the year, we have acquired two necessary major new programs.

The fundraising and membership database is being transferred to the Donor Management program.

The pay system is being transferred to Rockfast Revelation.

Both programs include additional relevant features, and have reputations for greater reliability than the systems which they replace.

## Shelter program

Repairs and improvements have been made by us to Sheltermate (the proprietary shelter and inspectorate animal management program) throughout the year, including the creation of our own reporting system. The full upgrade of functionality is anticipated in the near future.

## IT development

The RSPCA's IT systems continually change and expand, reflecting the wider IT world, and necessitating contingency planning.


The dedication and skills of our team very ably address the complex and developing IT activities of the RSPCA.

– David Howell  
IT manager and website administrator

**RSPCA NSW Head Office**

201 Rookwood Road  
Post Office Box 34  
YAGOONA NSW 2199

Telephone: (02) 9770 7555 Fax: (02) 9770 7575  
Email: [rspcansw@ozemail.com.au](mailto:rspcansw@ozemail.com.au) Donation line: 1800 803 355



The desperate search  
for the people he had loved  
and trusted  
who had dumped him  
and driven away.

The dashing up,  
open-mouthed,  
to somebody who  
looked familiar,  
then turning away  
in bewilderment.

*James Herriot, on a stray dog*

**RSPCA** 

For all creatures great and small